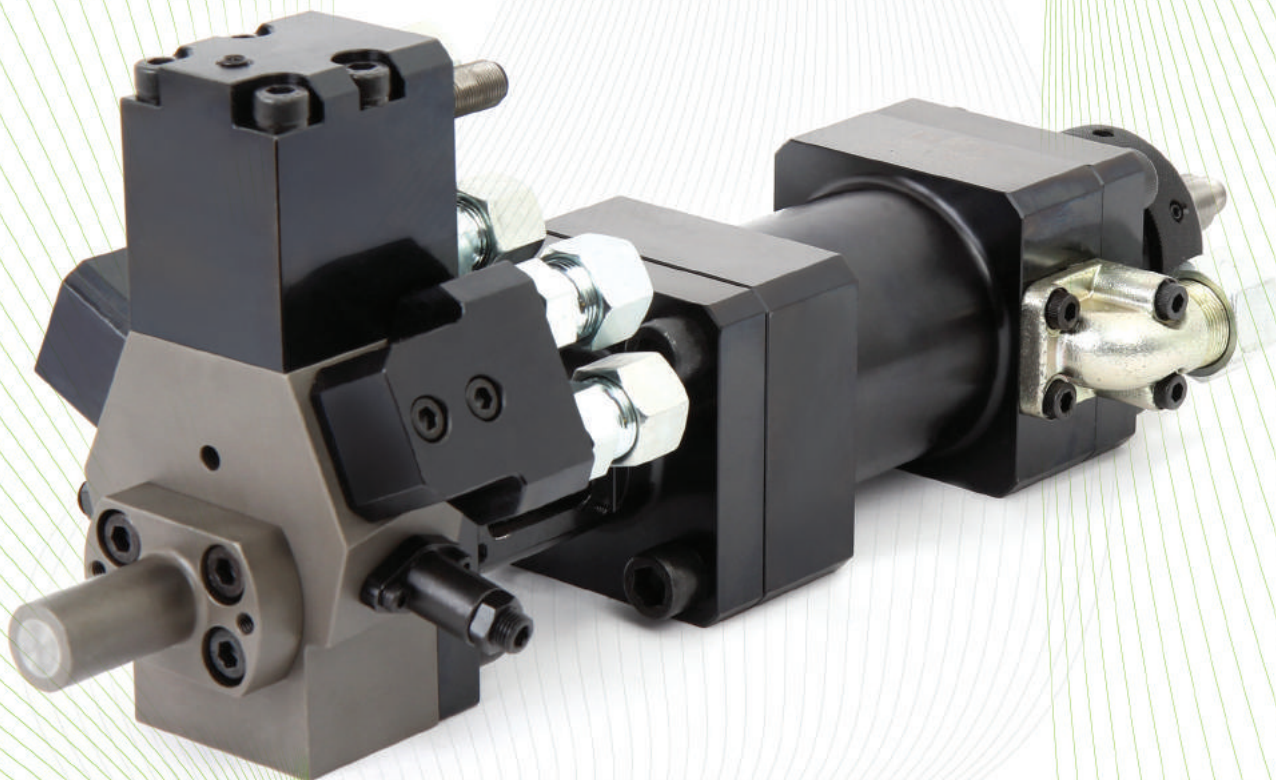




**DUT KOREA**  
Solution for Polyurethane

ULTIMATE HIGH PRESSURE MIXING HEAD

# HIGH PRESSURE MIXING HEAD



## INTRODUCTION OF MIXING HEAD

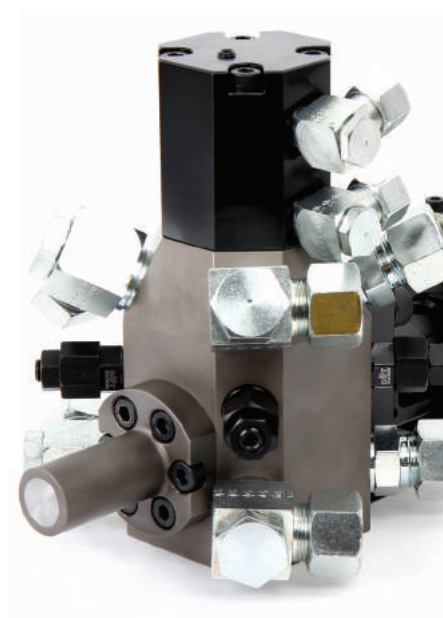
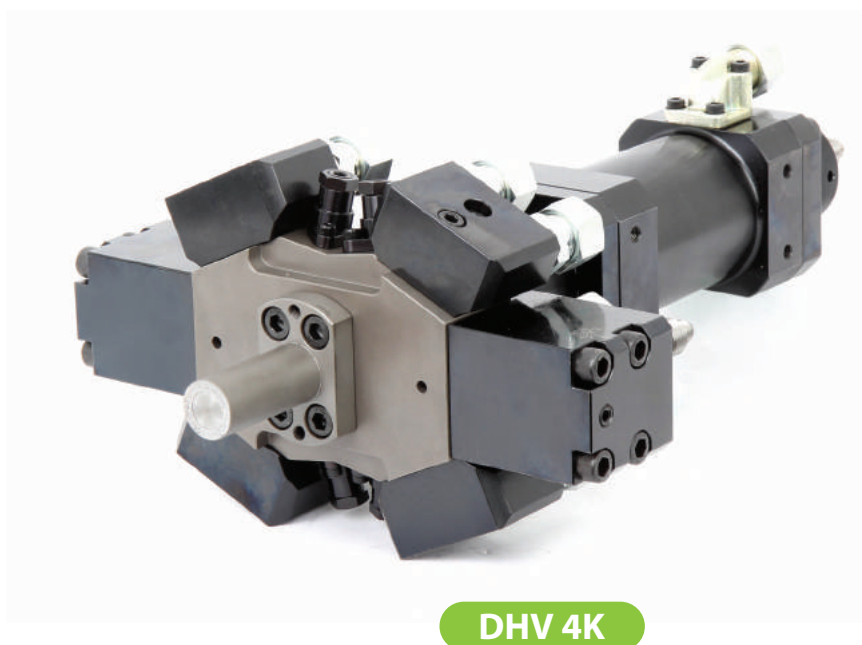
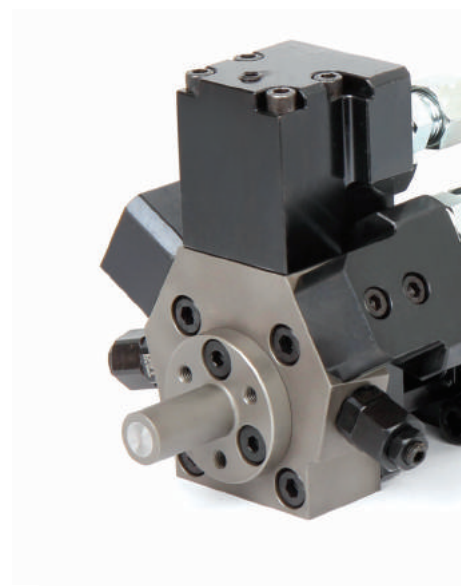
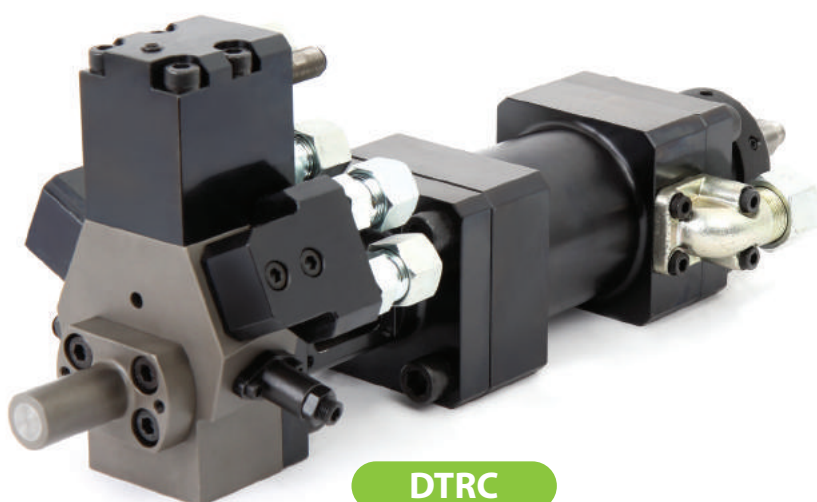
Mixing Head is a core part of the foaming machine. It determines the quality of end products and it affects the efficiency of raw materials. DUT's mixing head has improved from advantages of L-type mixing head, and it has patented as "Double Tilted Injection System".

DUT's wide ranges of models would help you choose your fitted applicable mixing head.

Double Tilted Nozzle and Rear Chamber Injection - DTRC

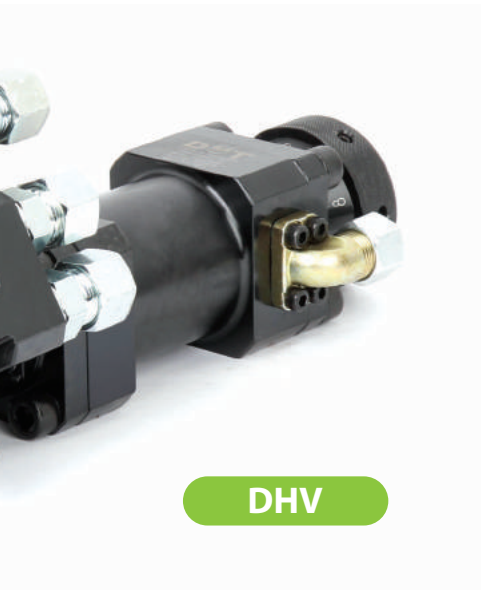
L-Type - DHVA Series

R-Type - DHS Series



## 2K,3K,4K AND 4KSH TYPE

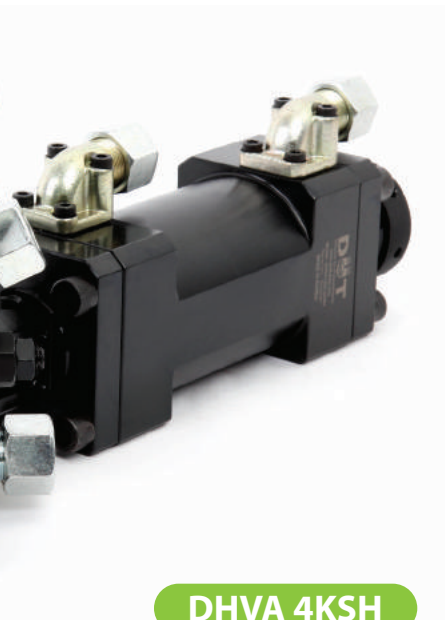
- 2K – 2Components Mixing Head with 2nozzles(POL/ISO)
- 3K – 3Components Mixing Head with 2nozzles and a pigment nozzle. (POL/ISO/Pigment)
- 4K – 4Components Dual Mixing Head with 4nozzles(POL/ISO)
- 4KSH – 4Components SH Mixing Head with 4 nozzles(POL/ISO)
- 6KSH – 6Components SH Mixing Head with 6 nozzles(POL/ISO)



DHV



DHS



DHVA 4KSH



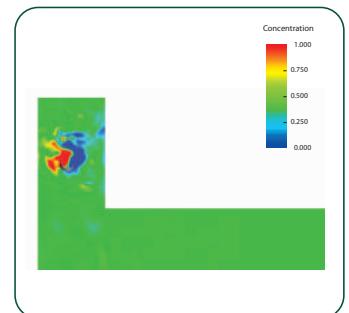
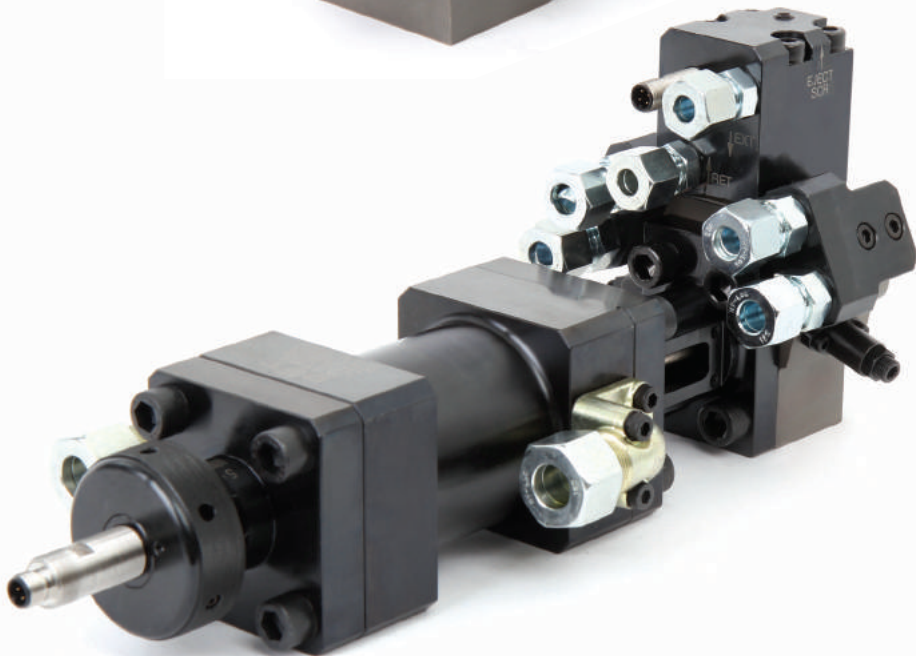
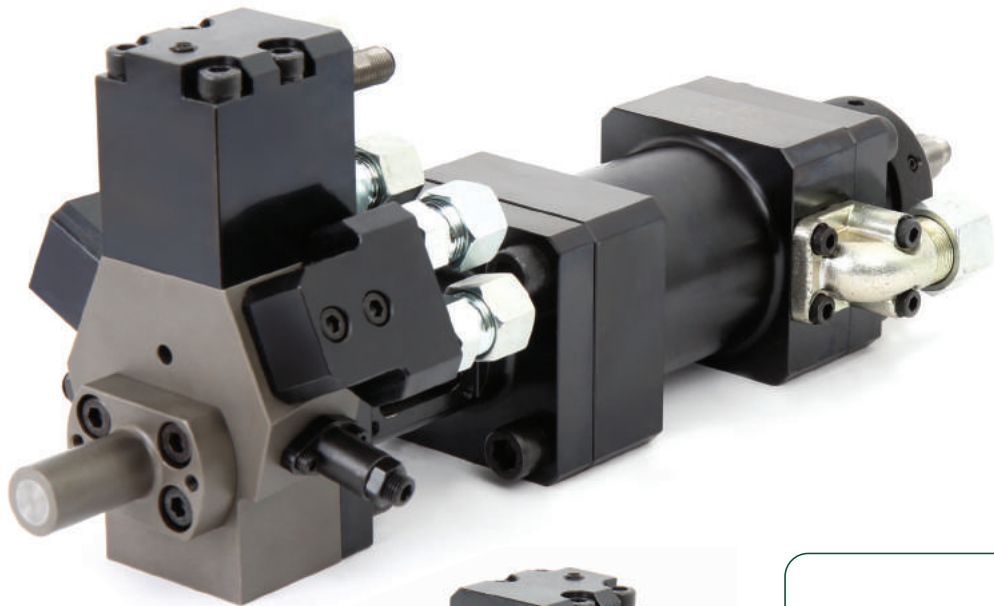
DHV 6KSH

# DTRC SERIES (Double Tilted Rear Chamber)

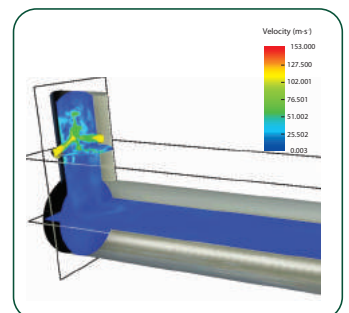
DUT's Double Tilted Rear Chamber(DTRC) mixing head system is designed to make maximum mixing efficiency while still maintaining desirable laminar flow. The DTRC mixing heads are engineered to provide more chemical stream collisions (Impingement) inside the mix head's mixing chamber via double tilted nozzle angle.

Moreover, the additional space provided in the mixing chamber for mixing is then able to provide the customers with the best mixing efficiency with lower pressure than previous L-type systems that are currently available by other OEM's.

- Maximum one year warranty



Concentration



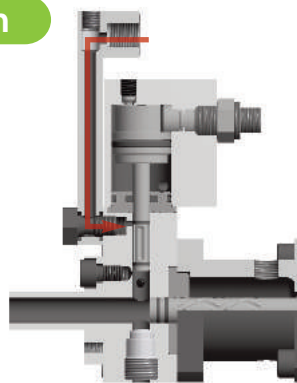
Velocity

## FEATURES

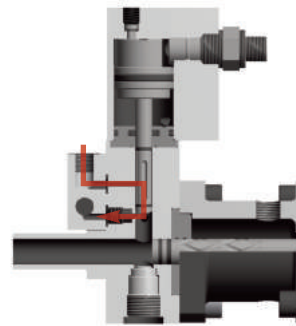
- Maximum efficiency by "Double Tilted Rear Chamber Mixing System"
- Ability to obtain the best mixing efficiency with lower pressure than other OEM's mixing systems
- High compatibility with various types of foaming machine
- Innovative nozzle control for minimum switching times for use with multi-component
- Anti-stick locking design (X-groove technology has applied to cleaning piston) & Anti-scrap floating design
- Long life cycle & low maintenance costs
- Repeatable Stroke adjustments (for L-Style mixing heads) from one mix head to the next
- The enhancement of the initial kinetic energy, which is caused by 1st and 2nd collisions
- The kinetic energy and laminar flow are further enhanced by the reversing effect in the extended mixing chamber
- With high viscosity materials, the DTRC maximizes the mixing efficiency by offsetting the process of kinetic energy
- The DTRC provides the softest laminar flow available with the best-mixed Polyurethane

## DTRC & DHV 3K TYPE

Non-Circulation

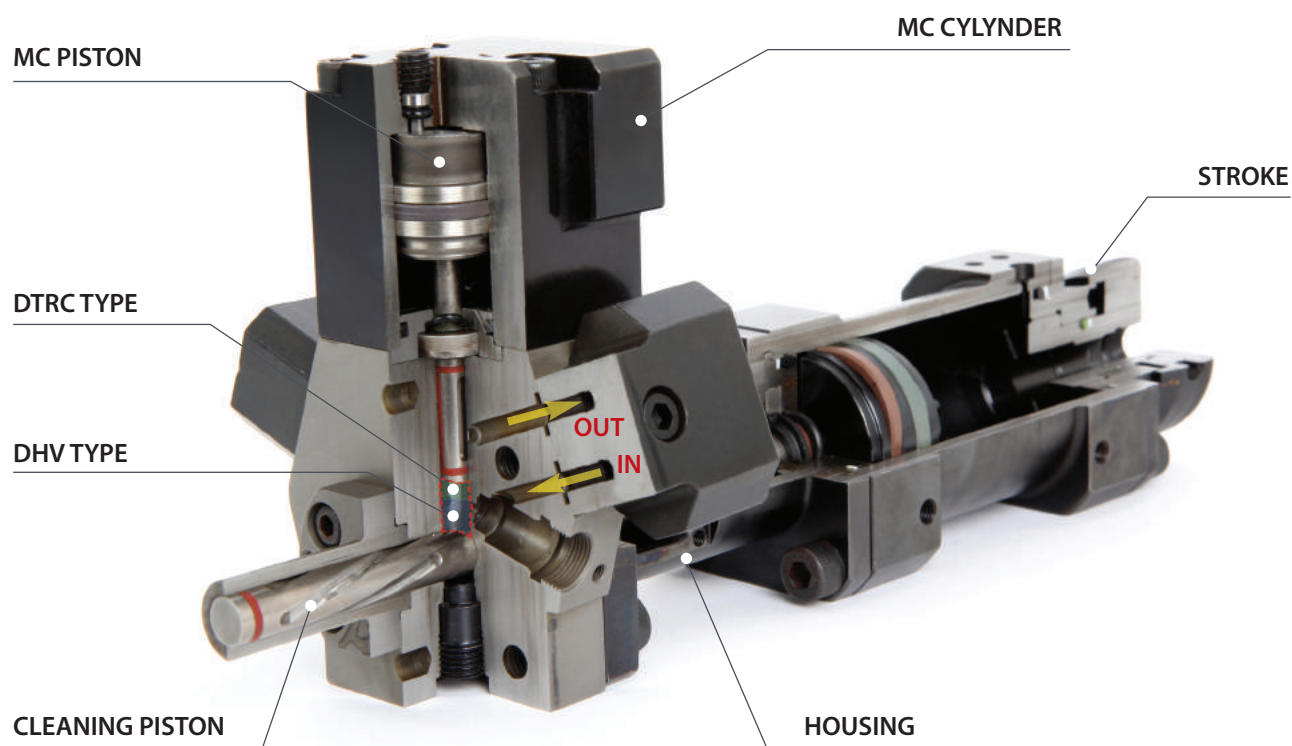


Circulation

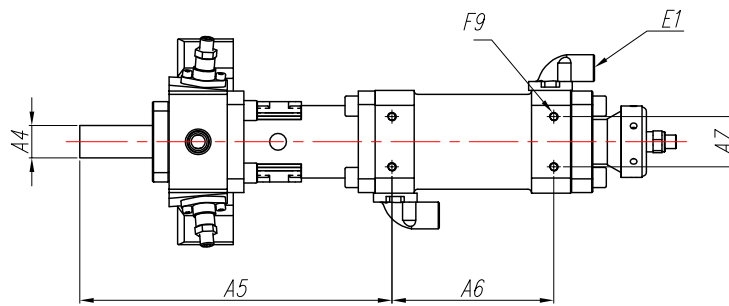
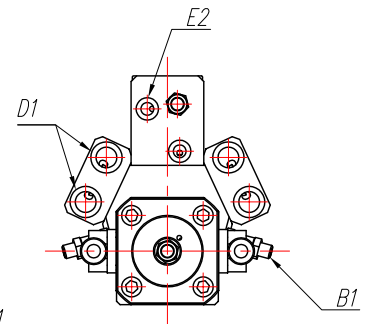
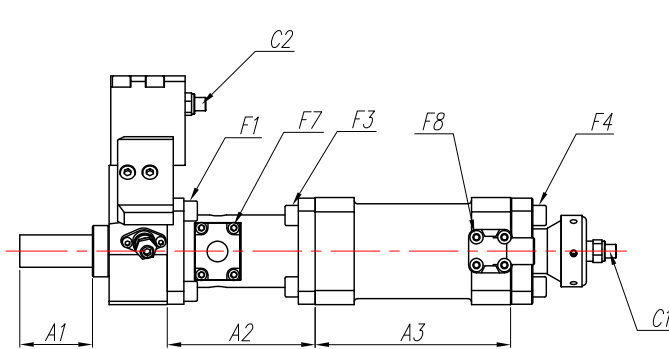
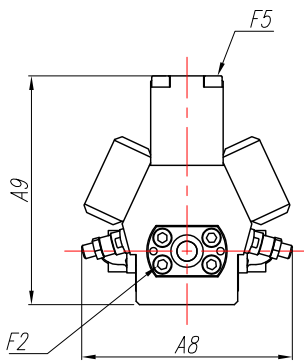
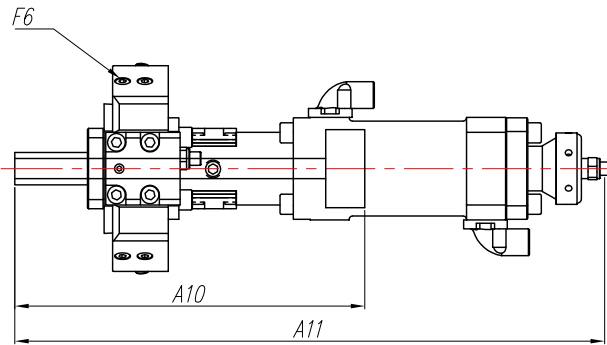


MIXING HEAD MODEL	Close Mold			Open Mold	KG
	1 : 1	1 : 2	1 : 3		
DTRC-0406-2K	20~120	30~90	40~80	20~50	5kg
DTRC-0608-2K	30~250	45~190	80~160	35~90	7kg
DTRC-0608-3K	30~250	45~190	80~160	35~90	7kg
DTRC-0710-2K	35~350	50~260	70~2450	40~140	8kg
DTRC-0812-2K	40~420	50~320	70~280	50~180	8kg
DTRC-0812-3K	40~420	50~320	70~280	50~180	8kg
DTRC-1014-2K	50~700	60~500	80~450	80~300	17kg
DTRC-1218-2K	130~1100	140~900	150~750	120~500	23kg
DTRC-1218-4K	130~1100	140~900	150~750	120~500	25kg
DTRC-1625-2K	370~2500	380~1800	390~1600	400~900	32kg

# DTRC SERIES (Double Tilted Rear Chamber)



MODEL	A1	A2	A3	A4	A5	A6	A7	A8	A9	A10	A11	B1
0406-2K	25	68	92	Ø11	146	62	24	128	106	165	287.1	G2-DCN06/G2-DSN06
0608-2K	35	82	110	Ø16	178	72	26	130	129	196	338.4	G2-DCN06/G2-DSN06
0608-3K	35	82	110	Ø13	178	72	26	130	129	196	338.4	G2-DCN06/G2-DSN06
0710-2K (35L)	35	82	109	Ø16	178.5	69	26	130	131.5	195	336.9	G2-DCN06/G2-DSN06
0710-2K (60L)	60	107	134	Ø16	228.5	94	26	130	131.5	245	411.9	G2-DCN06/G2-DSN06
0812-2K	35	88	118.5	Ø18	182.5	87.5	30	146	146	208.5	366.5	G2-DCN08/G2-DSN08
0812-3K	35	88	118.5	Ø18	182.5	87.5	30	146	146	208.5	366.5	G2-DCN08/G2-DSN08
0812-4K	35	88	118.5	Ø18	182.5	87.5	30	138	250	208.5	366.5	G2-DCN08/G2-DSN08
1014-2K	40	105	140.5	Ø21	218.5	109.5	40	148	165	249.5	430.4	G2-DCN08/G2-DSN08
1014-3K	40	105	140.5	Ø21	218.5	109.5	40	148	165	249.5	430.4	G2-DCN08/G2-DSN08
1218-2K	65	132.5	175	Ø29	279.5	145	45	214	205	313.5	534.1	G2-DCN10/G2-DSN10
1218-4K	65	132.5	175	Ø29	279.5	145	45	216	314	313.5	534.1	G2-DCN10/G2-DSN10
1625-2K	92	166	211	Ø39	343	183	52	218	220	384	631.7	G2-DCN10/G2-DSN10



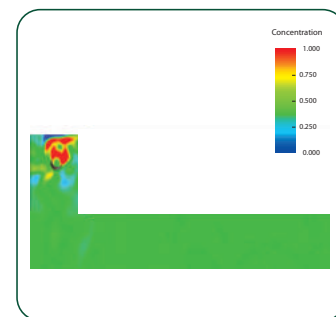
C1	C2	D1	E1	E2	F1	F2	F3	F4	F5	F6	F8	F9
M12	M12	PF1/8	Ø12L(DIN)	PF 1/4	M16X15	M5X8	M6X20	M6X20	M5X50	M6X25	M5X10	M5
M12	M12	PF3/8	Ø12L(DIN)	PF 1/4	M8X20	M5X10	M8X20	M8X15	M6X60	M6X25	M5X10	M6
M12	M12	PF3/8	Ø12L(DIN)	PF 1/4	M8X20	M5X10	M8X20	M8X15	M6X60	M6X25	M5X10	M6
M12	M12	PF3/8	Ø12L(DIN)	PF 1/4	M8X20	M5X8	M8X20	M8X15	M6X60	M6X25	M5X10	M6
M12	M12	PF3/8	Ø12L(DIN)	PF 1/4	M8X20	M5X8	M8X20	M8X15	M6X60	M6X25	M5X10	M6
M12	M12	PF3/8	Ø12L(DIN)	PF 1/4	M8X20	M8X10	M10X25	M10X25	M6X65	M6X25	M5X10	M8
M12	M12	PF3/8	Ø12L(DIN)	PF 1/4	M8X20	M8X10	M10X25	M10X25	M6X65	M6X25	M5X10	M8
M12	M18	PF3/8	Ø12L(DIN)	PF 1/4	M8X20	M8X10	M10X25	M10X25	M6X70	M6X20	M5X10	M8
M12	M18	PF3/8	Ø16S(DIN)	PF 1/4	M12X30	M8X15	M12X30	M12X35	M8X65	M6X30	M6X12	M8
M12	M18	PF3/8	Ø16S(DIN)	PF 1/4	M12X30	M8X15	M12X30	M12X35	M8X65	M6X30	M6X12	M8
M18	M18	PF3/8	Ø16S(DIN)	PF 1/4	M12X30	M10X16	M12X30	M12X35	M10X80	M8X35	M6X12	M8
M18	M18	PF1/2	Ø16S(DIN)	PF 1/4	M12X30	M10X16	M12X30	M12X35	M10X80	M8X35	M6X12	M8
M18	M18	PF1/2	Ø16S(DIN)	PF 3/8	M16X35	M12X16	M16X35	M16X35	M10X80	M8X40	M6X12	M8

# DHV SERIES

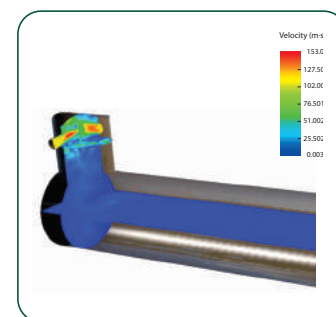
DHV Series has been designed for customers who need the ultimate quality of end products.

DHVM Series is special type for length of outlet pipe and it is applied to close mold.

- Maximum one year warranty

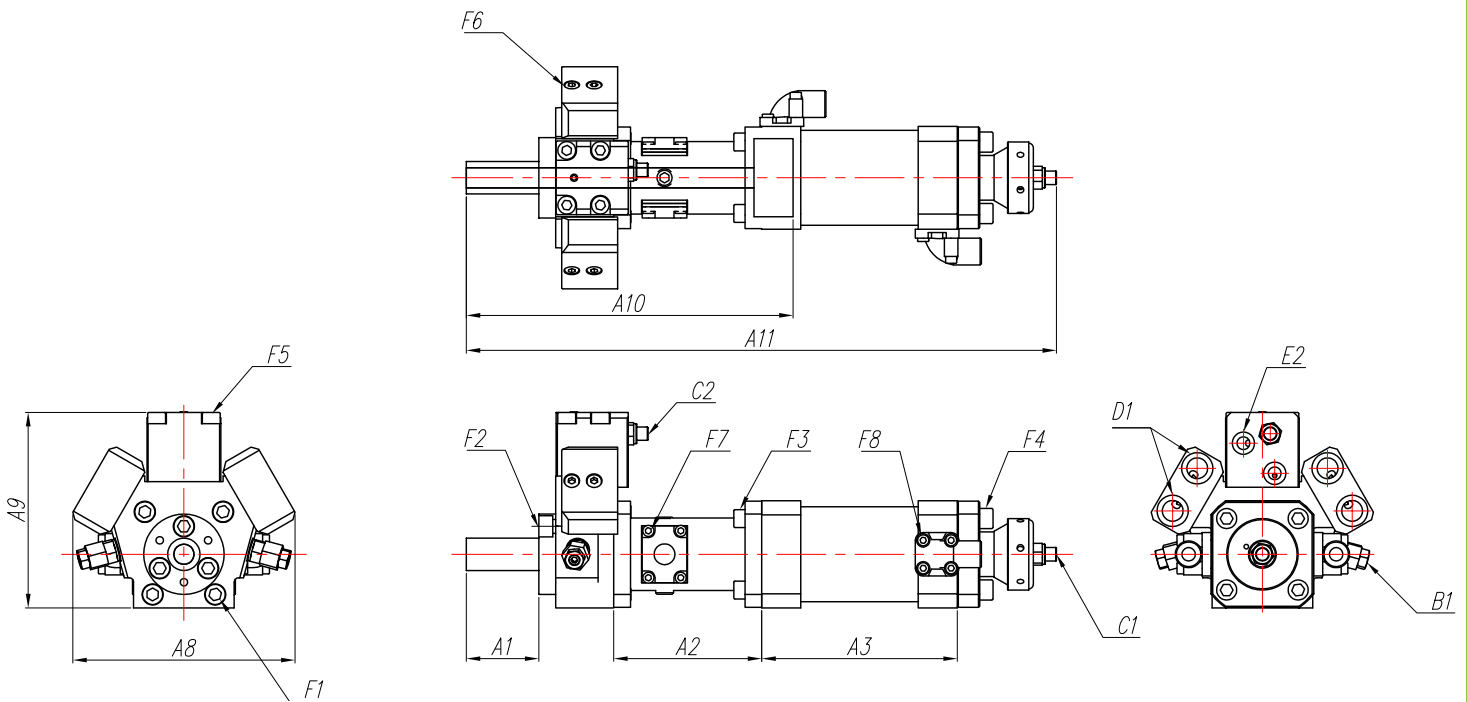


Concentration



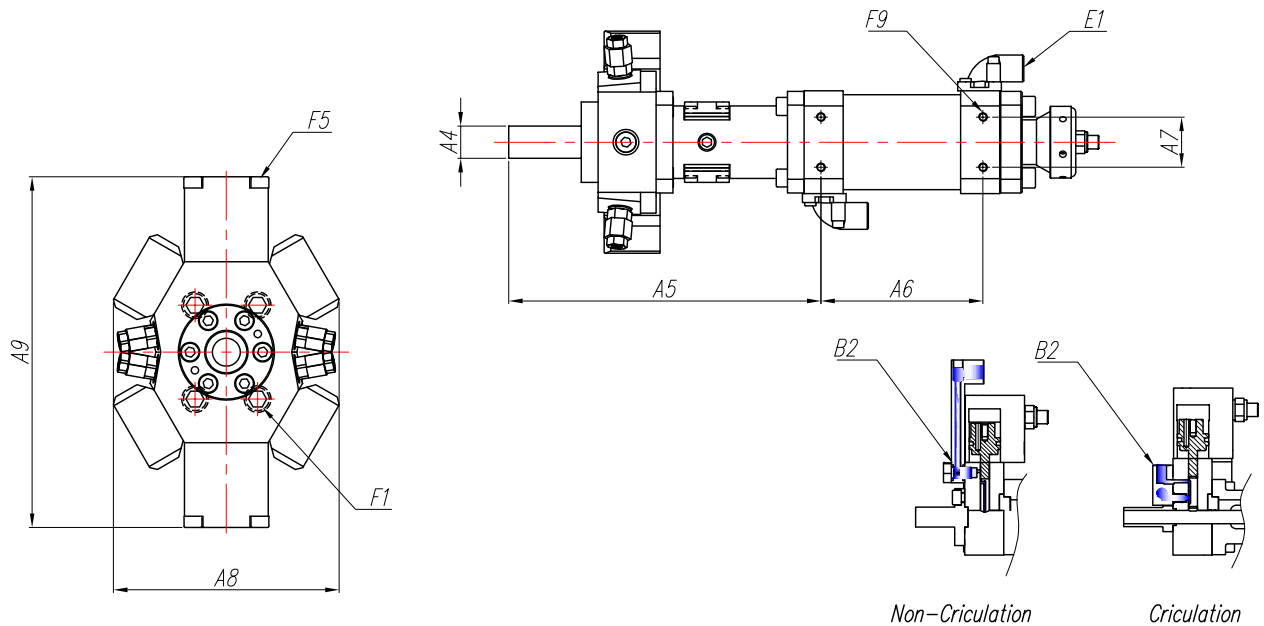
Velocity

MIXING HEAD MODEL	Close Mold			Open Mold	KG
	1 : 1	1 : 2	1 : 3		
DHV-0507-2K	30~190	45~180	45~165	30~80	6kg
DHV-0812-2K	40~420	50~320	70~280	50~180	8kg
DHV-0812-3K	40~420	50~320	70~280	50~180	8kg
DHV-0812-4K	40~420	50~320	70~280	50~180	11kg
DHV-1014-2K	50~700	60~500	80~450	60~300	17kg
DHV-1014-3K	50~700	60~500	80~450	60~300	17kg
DHV-1014-4K	50~700	60~500	80~450	80~300	19kg
DHV-1218-2K	130~1100	140~900	150~750	120~500	23kg
DHV-1218-3K	130~1100	140~900	150~750	120~500	23kg
DHV-1422-2K	280~1600	250~1800	240~1500	230~550	27kg
DHV-1422-4K	280~1600	250~1800	240~1500	230~550	29kg
DHV-1622-12K	130~1200	130~1000	150~850	130~680	39kg
DHV-1625-2K	370~2500	380~1880	600~1660	400~900	32kg
DHV-1625-4K	370~2500	380~1880	600~1660	400~900	35kg



MODEL	A1	A2	A3	A4	A5	A6	A7	A8	A9	A10	A11	B1
0507-2K (5L)	5	58.5	73	Ø14	117	39	24	128.3	117.3	135	240	DCN06 / DSN06
0507-2K (25L)	25	78.5	93	Ø14	157	59	24	128.3	117.3	175	300	DCN06 / DSN06
0507-2K (72L)	72	112.8	141.5	Ø18	238.3	107.5	24	128.3	117.3	257.8	429.8	DCN06 / DSN06
0812-2K (35L)	35	67	118.5	Ø18	161.5	87.5	30	138.1	143	187.5	345.5	DCN08 / DSN08
0812-2K (40L)	40	72	123.5	Ø18	171.5	92.5	30	138.1	143	197.5	360.5	DCN08 / DSN08
0812-2K (60L)	60	92	143.5	Ø18	211.5	112.5	30	138.1	143	237.5	420.5	DCN08 / DSN08
0812-2K (80L)	80	109	163.5	Ø20	248.5	132.5	30	138.1	143	274.5	477.5	DCN08 / DSN08
0812-3K (NON)	35	67	118.5	Ø18	161.5	118.5	30	138.1	143	187.5	345.5	DCN08 / DSN08
0812-3K (CR)	35	67	118.5	Ø17	161.5	118.5	30	138.1	149	187.5	345.5	DCN08 / DSN08
0812-4K	30	67	118.5	Ø18	161.5	118.5	30	135	215.8	187.5	345.5	DCN08 / DSN08
1014-2K (38L)	38	79	140.5	Ø21.5	192.5	109.5	40	181.9	164	223.5	404.5	DCN10 / DSN10
1014-2K (60L)	60	79	162.5	Ø21	214.5	131.5	40	181.9	164	245.5	448.5	DCN10 / DSN10
1014-2K (70L)	70	79	172.5	Ø21	224.5	141.5	40	181.9	164	255.5	468.5	DCN10 / DSN10
1014-2K (100L)	100	79	202.5	Ø21	254.5	171.5	40	181.9	164	285.5	528.5	DCN10 / DSN10
1014-3K (NON)	38	79	140.5	Ø21.5	192.5	109.5	40	181.9	164	223.5	404.5	DCN10 / DSN10
1014-3K (CR)	38	79	140.5	Ø21.5	192.5	109.5	40	181.9	164	223.5	404.5	DCN10 / DSN10
1218-2K (65L)	65	132.5	175	Ø29	279.5	145	45	196.5	178	313.5	534.1	DCN10 / DSN10
1218-2K (75L)	75	142.5	185	Ø25	299.5	155	45	196.5	178	333.5	544.1	DCN10 / DSN10
1218-2K (100L)	100	167.5	210	Ø29	349.5	180	45	196.5	178	383.5	639	DCN10 / DSN10
1218-3K (NON)	65	132.5	175	Ø29	279.5	145	45	196.5	178	313.5	534.1	DCN10 / DSN10
1218-3K (CR)	65	132.5	175	Ø29	279.5	145	45	198.2	205.6	313.5	534.1	DCN10 / DSN10
1422-2K	60	105	175	Ø34	248	145	48	190.1	192.3	284	493	DCN10 / DSN10
1422-4K	60	105	175	Ø34	248	145	48	190.1	285.5	284	500	DCN10 / DSN10
1622-6KSH	61.5	90	205	Ø34	317	175	46	193.6	222.5	426.5	664.6	DCN10 / DSN10
1625-2K (92L)	92	168	211	Ø39	343	183	52	197	213	384	631.7	DCN10 / DSN10
1625-2K (100L)	100	176	219	Ø35	359	191	52	197	213	400	655.7	G2-DHN08
1625-2K (110L)	110	186	229	Ø39	379	201	52	197	213	420	685.7	DCN10 / DSN10
1625-2K (300L)	300	48	383	Ø35	400	353	42	197	213	434	857.7	DCN10 / DSN10
1625-4K	92	168	211	Ø39	343	183	52	197	213	384	631.7	DCN10 / DSN10

# DHV SERIES



C1	C2	D1	E1	E2	F1	F2	F3	F4	F5	F6	F7	F8	F9
M18	M18	PF 3/8	Ø12L(DIN)	PF1/4	M6X20	M5X10	M8X20	M8X20	M6X45	M6X25	M4X10	M5X10	M8
M18	M18	PF 3/8	Ø12L(DIN)	PF1/4	M6X20	M5X10	M8X20	M8X20	M6X45	M6X25	M4X10	M5X10	M8
M18	M18	PF 3/8	Ø12L(DIN)	PF1/4	M6X20	M5X10	M8X20	M8X20	M6X45	M6X25	M4X10	M5X10	M8
M18	M18	PF 3/8	Ø12L(DIN)	PF1/4	M8X40	M8X10	M8X25	M8X25	M6X60	M6X25	M4X10	M5X10	M8
M18	M18	PF 3/8	Ø12L(DIN)	PF1/4	M8X40	M8X10	M8X25	M8X25	M6X60	M6X25	M4X10	M5X10	M8
M18	M18	PF 3/8	Ø12L(DIN)	PF1/4	M8X40	M8X10	M8X25	M8X25	M6X60	M6X25	M4X10	M5X10	M8
M18	M18	PF 3/8	Ø12L(DIN)	PF1/4	M8X40	M8X10	M8X25	M8X25	M6X60	M6X25	M4X10	M5X10	M8
M18	M18	PF 3/8	Ø12L(DIN)	PF1/4	M8X40	M8X10	M8X25	M8X25	M6X60	M6X25	M4X10	M5X10	M8
M18	M18	PF 3/8	Ø12L(DIN)	PF1/4	M8X40	M8X10	M8X25	M8X25	M6X60	M6X25	M4X10	M5X10	M8
M18	M18	PF 3/8	Ø12L(DIN)	PF1/4	M8X40	M8X10	M8X25	M8X25	M6X60	M6X25	M4X10	M5X10	M8
M18	M18	PF 1/2	Ø12L(DIN)	PF1/2	M8X40	M8X15	M10X25	M10X25	M6X55	M6X25	M4X10	M5X10	M8
M18	M18	PF 3/8	Ø16S(DIN)	PF1/4	M10X60	M10X12	M10X30	M10X35	M10X50	M8X35	M6X10	M6X12	M8
M18	M18	PF 3/8	Ø16S(DIN)	PF1/4	M10X60	M10X12	M10X30	M10X35	M10X50	M8X35	M6X10	M6X12	M8
M18	M18	PF 3/8	Ø16S(DIN)	PF1/4	M10X60	M10X12	M10X30	M10X35	M10X50	M8X35	M6X10	M6X12	M8
M18	M18	PF 3/8	Ø16S(DIN)	PF1/4	M10X60	M10X12	M10X30	M10X35	M10X50	M8X35	M6X10	M6X12	M8
M18	M18	PF 3/8	Ø16S(DIN)	PF1/4	M10X60	M10X12	M10X30	M10X35	M10X50	M8X35	M6X10	M6X12	M8
M18	M18	PF 3/8	Ø16S(DIN)	PF1/4	M10X60	M10X12	M10X30	M10X35	M10X50	M8X35	M6X10	M6X12	M8
M18	M18	PF 3/8	Ø16S(DIN)	PF1/4	M10X60	M10X12	M10X30	M10X35	M10X50	M8X35	M6X10	M6X12	M8
M18	M18	PF 1/2	Ø16S(DIN)	PF1/4	M12X55	M12X16	M10X30	M12X35	M10X65	M8X35	M6X10	M6X12	M8
M18	M18	PF 1/2	Ø16S(DIN)	PF1/4	M12X55	M12X16	M10X30	M12X35	M10X65	M8X35	M6X10	M6X12	M8
M18	M18	PF 1/2	Ø16S(DIN)	PF1/4	M12X55	M12X16	M10X30	M12X35	M10X65	M8X35	M6X10	M6X12	M8
M18	M18	PF 1/2	Ø16S(DIN)	PF1/4	M12X55	M12X16	M10X30	M12X35	M10X65	M8X35	M6X10	M6X12	M8
M18	M18	PF 1/2	Ø16S(DIN)	PF1/4	M12X55	M12X16	M10X30	M12X35	M10X65	M8X35	M6X10	M6X12	M8
M18	M18	PF 1/2	Ø16S(DIN)	PF3/8	M10X30	M10X16	M12X35	M12X35	M10X70	M8X35	M6X10	M6X12	M8
M18	M18	PF 1/2	Ø16S(DIN)	PF3/8	M10X30	M10X16	M12X35	M12X35	M10X70	M8X35	M6X10	M6X12	M8
M18	M18	PF 1/2	Ø16S(DIN)	PF3/8	M10X30	M10X16	M12X35	M12X35	M10X70	M8X35	M6X10	M6X12	M8
M18	M18	PF 1/2	Ø16S(DIN)	PF3/8	M16X35	M16X16	M16X35	M16X35	M10X75	M8X40	M6X10	M6X12	M8
M18	M18	PF 1/2	Ø16S(DIN)	PF3/8	M16X35	M16X16	M16X35	M16X35	M10X75	M8X40	M6X10	M6X12	M8
M18	M18	PF 1/2	Ø16S(DIN)	PF3/8	M16X35	M16X16	M16X35	M16X35	M10X75	M8X40	M6X10	M6X12	M8

# DHS SERIES

DHS Series called R-type (straight type) mixing head in common and it is applied inject big volume of output.

DHS NA type is special type for the PU sandwich panel line.

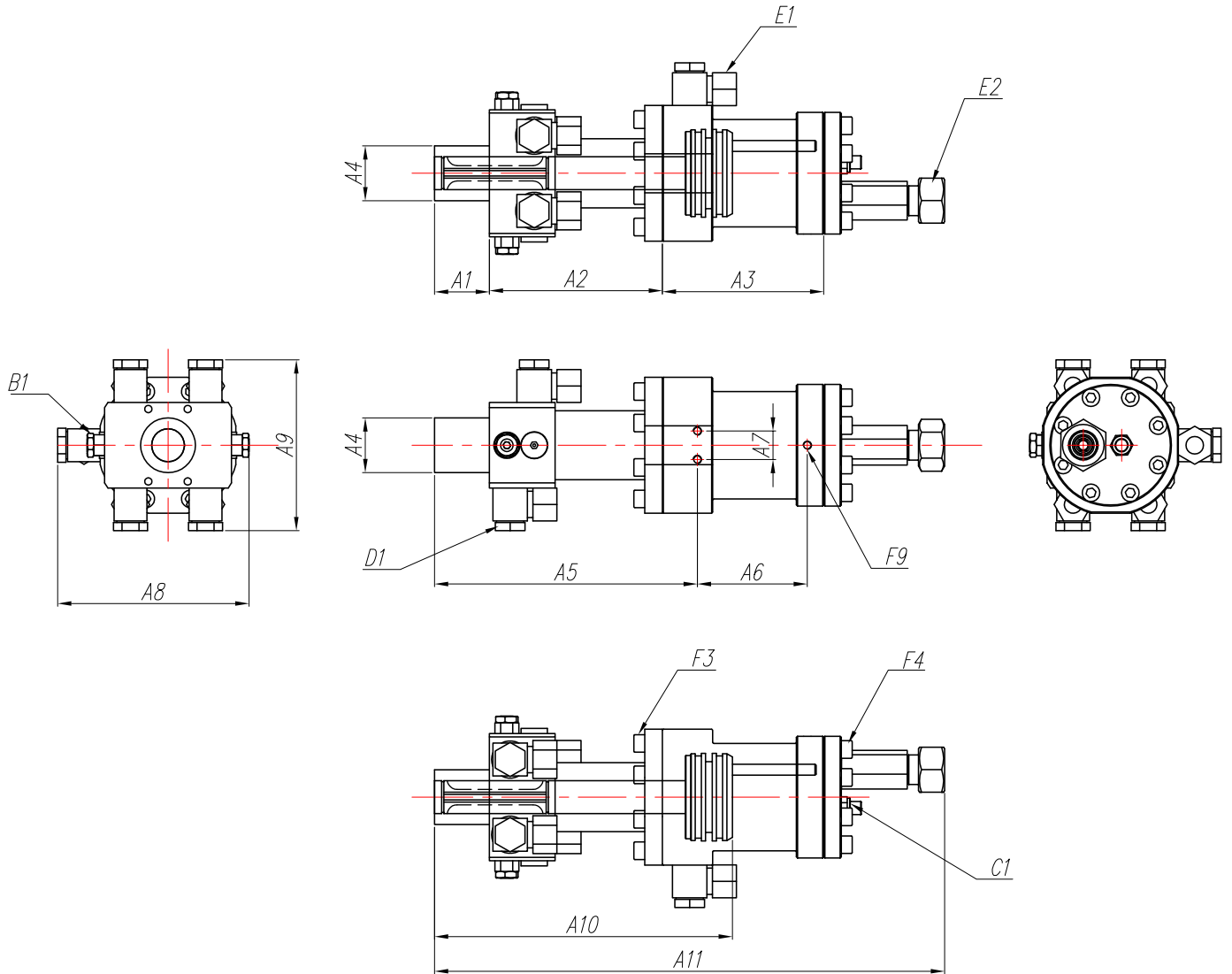
•Maximum one year warranty



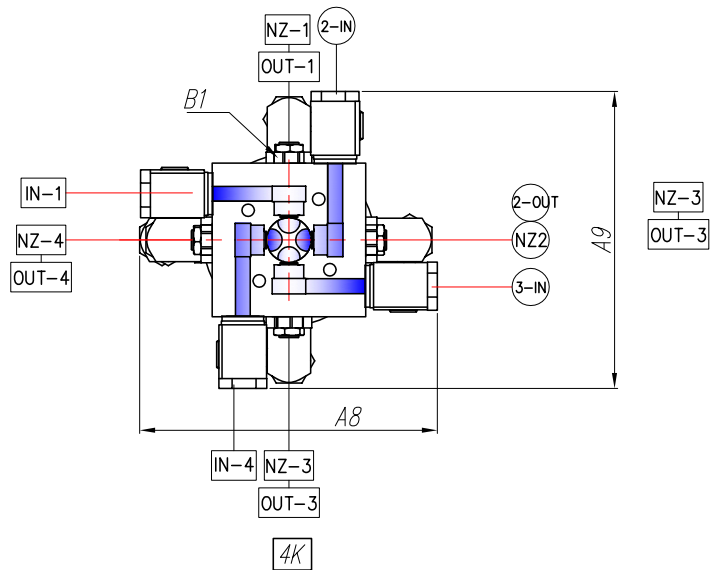
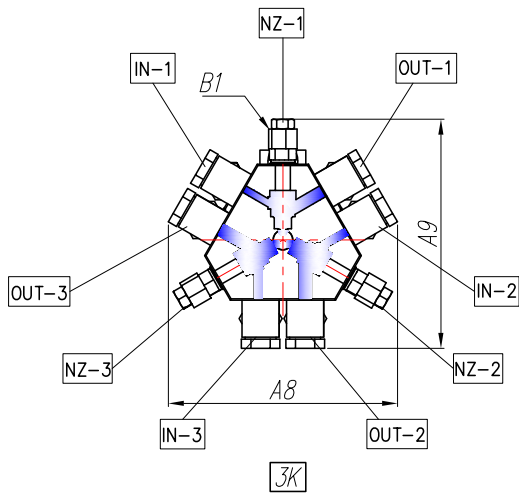
Concentration

MIXING HEAD MODEL	Close Mold			Open Mold	KG
	1 : 1	1 : 2	1 : 3		
DHS-003R-2K	10~80	15~80	20~50		2kg
DHS-010R-3K	110~800	80~450	80~350		10kg
DHS-012R-2K	150~1300	230~1000	250~900	150~80	8kg
DHS-12RV-2K	150~1300	230~1000	250~900	150~80	8kg
DHS-014R-2K	280~1600	250~1500	240~1400		14kg
DHS-016R-2K	400~2000	250~1300	270~1300		15kg
DHS-016R-3K	400~2000	250~1300	270~1300		16kg
DHS-018R-2K	400~2500	450~2300	500~2000		17kg
DHS-025R-2K	1000~50000	1250~4500	1400~4100		24kg
DHS-030R-2K	1000~8000	1250~4500	1400~4100		29kg
DHS-036R-2K	3000~10000	3050~10200	3500~9000		32kg
DHS-036R-4K	3000~10000	3050~10200	3500~9000		32kg
DHS-08VN-2K				40~300	3kg
DHS-10NA-2K				80~500	5kg
DTRC-020S-2K	600~3000	650~2250	700~2000		19kg

# DHS SERIES



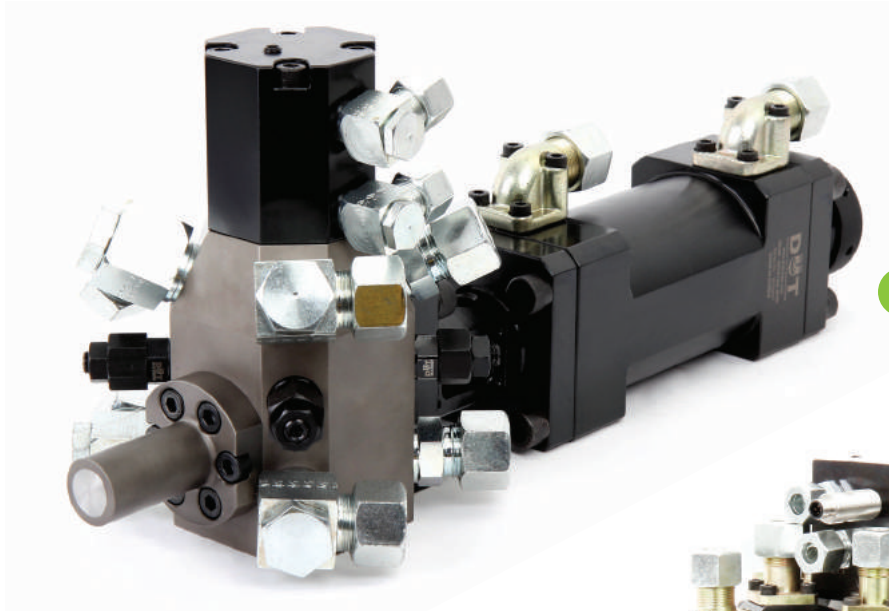
MODEL	A1	A2	A3	A4	A5	A6	A7	A8	A9	A10	A11
12R-2K	29	96.5	91.5	Ø21	145.5	51.5	40	146	92	161.5	266.6
14R-2K	55	116	137	Ø24	195	97	34	191	97	224	404
16R-2K	40	136	145	Ø28	184	113	42	189	147.4	232	397.6
16R-3K (30L)	30	136	119	Ø40	174	103	36	188	189	222	377.6
16R-3K (40L)	40	136	129	Ø40	184	113	42	188	189.4	232	397.6
18R-2K	60	129	146.5	Ø29	197	130.5	42	184	146	245	428
25R-2K	30	140	127	Ø40	202	80	26	171	156	234	404.6
30R-2K	50	158	147.5	Ø50	240	100.5	26	182.4	172	272	466
36R-2K	48	166	154	Ø56	246	107	26	197.6	186.5	282.5	486.5
36R-4K	48	166	154	Ø56	246	107	26	226	226	282.5	486.5
DTRC-12S-2K	100	174	169	Ø19	294	129	40	92.4	185.4	310	601.5
DTRC-16S-2K	50	138	144	Ø29	196	128	42	124.7	174	244	454.7
DTRC-20S-2K	50	131	154	Ø35	212	138	26	135	222	260	494



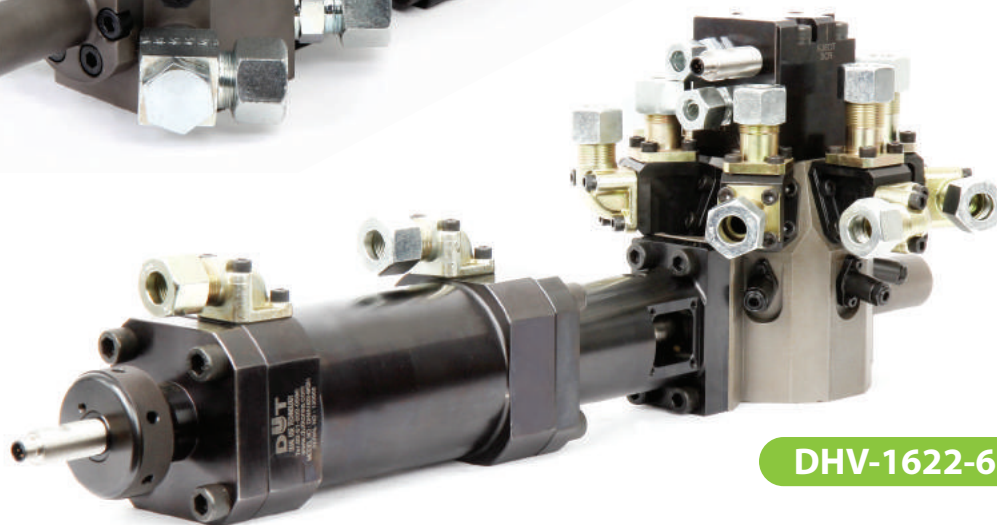
B1	C1	D	E1	E2	F3	F4	F9
DCN08	M18	PF 3/8	Ø12L(DIN)	G1/4	M8X20	M8x25	M6
DCN10/DSN10	M18	PF 3/8	Ø16S(DIN)	PF1/2	M8X30	M8x30	M8
DCN10	M18	PF 1/2	Ø16S(DIN)	PF1/2	M10X30	M10X30	M8
DCN10/DSN10	M18	PF 1/2	Ø16S(DIN)	PF1/2	M10X40	M10X35	M8
DCN10/DSN10	M18	PF 1/2	Ø16S(DIN)	PF1/2	M10X40	M10X35	M8
DCN10/DSN10	M18	PF 1/2	Ø16S(DIN)	PF1/2	M10X40	M10X35	M8
DCN20	M18	PF 1/2 PF3/4	Ø16S(DIN)	PF1/2	M10X20	M10X20	M8
DCN20	M18	PF3/4	Ø20S(DIN)	PF1/2	M10X35	M10X35	M8
DCN30	M18	PF 3/4 PF 1	Ø20S(DIN)	PF3/4	M10X35	M10X35	M8
DCN30	M18	PF 3/4 PF 1	Ø20S(DIN)	PF3/4	M10X35	M10X30	M8
G2-DSN08/G2-DCN08	M18	UNF 7/16"	UNF9/16-18	UNF9/16-18	M6X30	M8X25	M6
G2-DSN08	M18	PF1/2	Ø16S(DIN)	PF1/2	M10X30	M10X35	M8
G2-DSN10	M18	PF1/2	Ø16S(DIN)	PF1/2	M10X30	M10X35	M8

# 4KSH & 6KSH SERIES

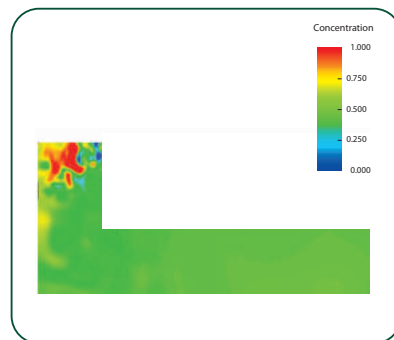
4KSH type mixing heads are designed to produce 2 and more different type of foams by one mixing head.



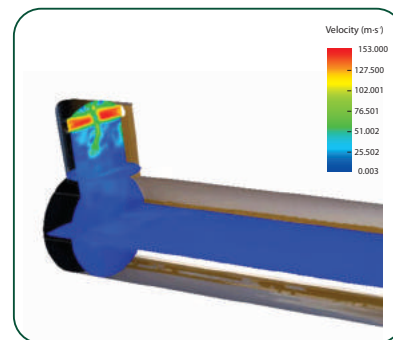
**DHVA-1220-4KSH**



**DHV-1622-6KSH**

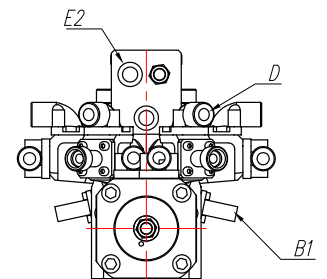
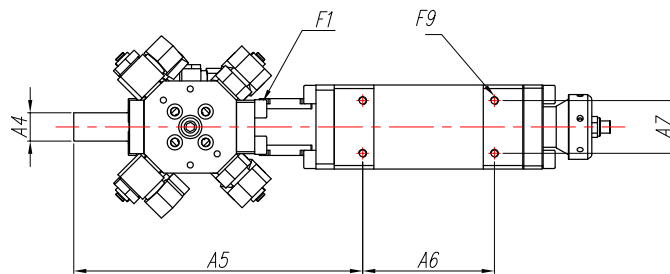
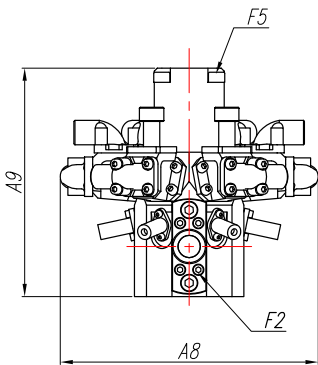
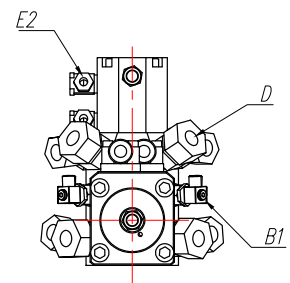
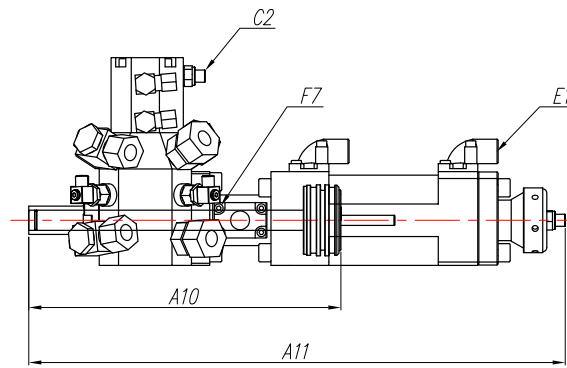
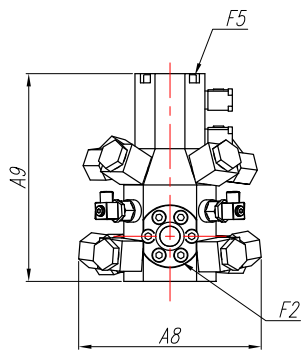
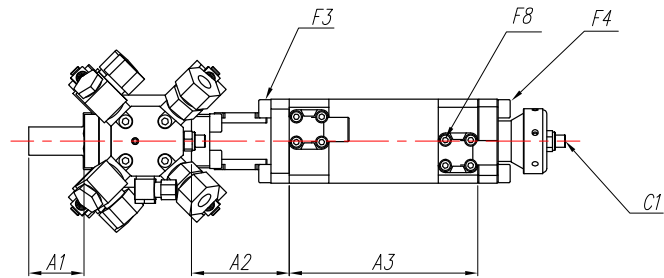


**Concentration**



**Velocity**

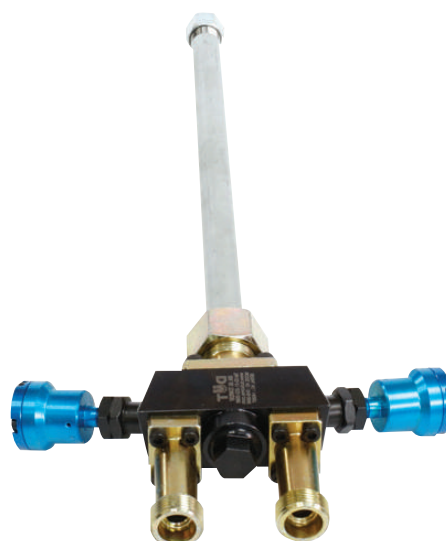
MIXING HEAD MODEL	Close Mold			Open Mold	KG
	1 : 1	1 : 2	1 : 3		
DHVA-1220-4KSH	130~1100	130~950	150~700	130~550	24kg
DHV-1622-6KSH	130~1200	130~1000	150~850	130~680	34kg



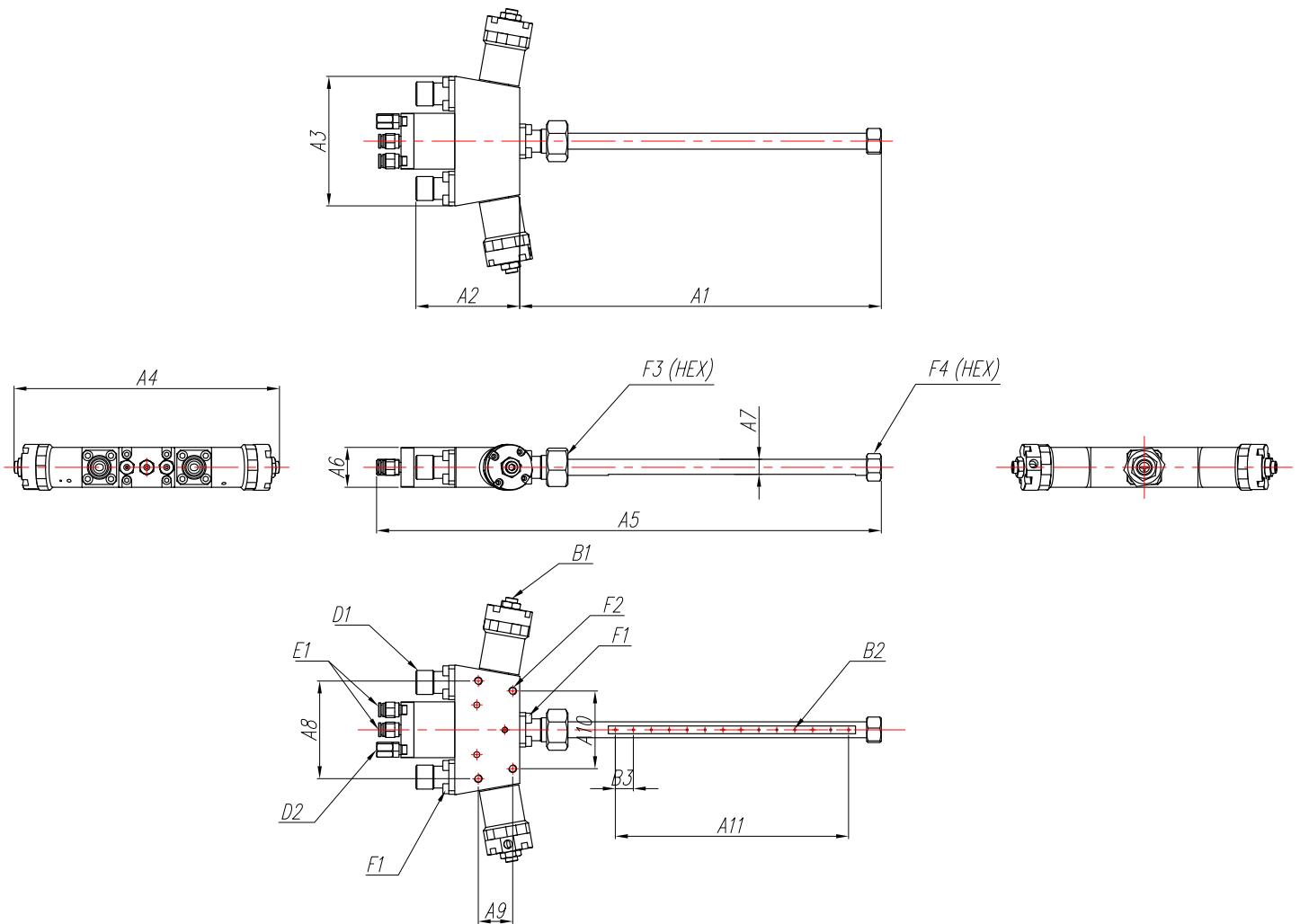
MODEL	A1	A2	A3	A4	A5	A6	A7	A8	A9	A10	A11	B1
DHVA-1220-4KSH	54.5	96.5	186	Ø28	285	130	52	216	205	308	537.6	DHN10
DHV-1622-6KSH	60	165	203.5	Ø34	390.5	175	46	193.6	222.5	426.5	664.6	G2-DHN08

C1	C2	D	E1	E2	F1	F2	F3	F4	F5	F7	F8	F9
M18	M18	16S	Ø16S(DIN)	PF 1/4	M12x30	M8x12	M12x30	M12x35	M8x70	M5x10	M6x12	M8
M18	M18	16S	Ø16S(DIN)	PF3/8	M10x30	M6x20	M12x35	M12x35	M10x80	M5x10	M6x12	M8

# NA TYPE SERIES



MODEL	A1	A2	A3	A4	A5	A6	A7	A8	A9	A10	A11
DHS-06NA	286	104	130	263	431	40	Ø12 / Ø9	98	34.5	78	162
DHS-08VN	330	106	70.5	180	435.5	30	Ø16 / Ø12			18	220
DHS-10NA	364.5	104	130	267	508	40	Ø16 / Ø12	98	34.5	78	234
DHS-12NA	364.5	104	130	267	510	40	Ø16 / Ø12	108	34.5	78	234




B1	B2	B3	D1	D2	E1	F1	F2	F3	F4
PDNS-10	Ø2	18	Ø16	TC 08-01	PC 08-01	M6x16L/ M5x60L	M8	HEX 22	HEX 17
G2-PDSN-06	Ø2	15	Ø16			M5x12L/ M4x12L	M6	HEX 30	HEX 19
PDNS-10	Ø2	18	Ø16	TC 08-01	PC 08-01	M6x16L/ M5x60L	M8	HEX 30	HEX 19
PDNS-10	Ø2	18	Ø16	TC 08-01	PC 08-01	M6x16L/ M5x60L	M8	HEX 30	HEX 22

# GLOBAL NETWORK

 **DUT-China**  
**SHANGHAI**  
 E-mail : Kimhongam@hotmail.com



 **DUT**  
**DUT-Korea Head Office**  
 173, Hwajeonsandan 1-ro, Gangseo-gu, Busan, Republic of Korea, 46741  
 E-mail : webmaster@dutkorea.com



 **DUT-Russia**  
**MOSCOW**  
 E-mail : khmile@lprglobal.com

 **DUT-Europe**  
**LUXEMBOURG**  
 E-mail : fisselbrandjy@pofi.lu

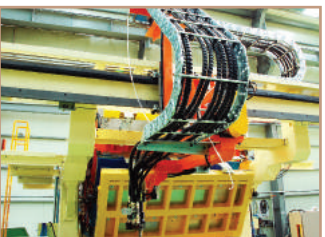
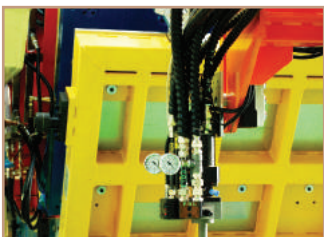
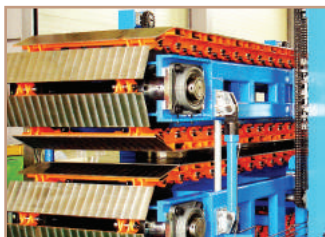


 **DUT-Iran**  
**TEHRAN**  
 E-mail : info@bfgco.com

 **DUT-middle East**  
**DUBAI**  
 E-mail : business@dutkorea.com

 **DUT-South Africa**  
**CAPE TOWN**  
 E-mail : africa@dutkorea.com

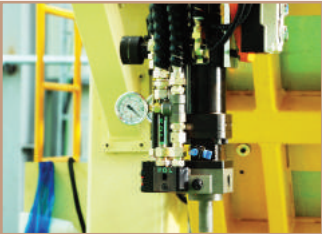
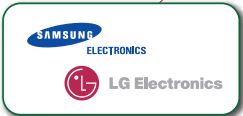
 **DUT-India**  
**MUMBAI**  
 E-mail : franco@dutkorea.com



 **DUT-Canada**  
ONTARIO  
E-mail : khmile@lprglobal.com

 **DUT-North America**  
OHIO  
E-mail : Jeff@hunterpure.com

 **DUT-Brazil**  
SAO PAULO  
E-mail : comex@amino.com.br



ULTIMATE HIGH PRESSURE MIXING HEAD

# HIGH PRESSURE MIXING HEAD

## R&D

DUT's R&D Team consists of PU specialists. Their considerations are always to solve the customer's difficulties and DUT's innovative technology is created from the customer's requirement. DUT's R&D center is totally set by customers.

## Q/A

To offer reliable products, Q/A team has been working to control product's quality. The technical data and troubleshooting are stored in a DUT's Q/A database, and it helps to produce DUT's better products.

## PRODUCTION

The Production team has organized by skilled engineers and they manufacture DUT's innovative products by reliable equipment.

## Korea Head Office

Address : 173, Hwajeonsandan 1-ro, Gangseo-gu,  
Busan, Republic of Korea. 46741  
E-mail : webmaster@dutkorea.com  
info@dutkorea.com  
sales@dutkorea.com  
Tel : + 82 51 202 0586  
Fax : + 82 51 202 0647

## China Office

Address : Rm309, 8th Bldg, No.1177, RongMei Rd,  
SongJiang, Shanghai, CHINA, 201613  
E-mail : Kimhongam@hotmail.com  
Tel : + 86 21 6782 5061  
Mobile : + 86 13801883360

## India Office

Address : 1901 Skywalk Tower Tank Road Orlem, Malad West  
Mumbai 400064 INDIA  
E-mail : franco@dutkorea.com  
Tel : +91 22 32924679  
Mobile : +9821025714

## Europe Office

Address : 19, rue de Luxembourg L-4391 PONTPIERRE  
E-mail : fesselbrandjy@pofi.lu  
Mobile : + 33 6 78 66 41 26  
Fax : (00 352) 26 55 68 55

## Brazil Office

Address : Rua Dona Maria Fidélis, 161, Diadema - SP- Brasi,  
BRAZIL  
E-mail : comex@amino.com.br  
Tel : + 55 11 4077 3777

## North America Office

USA Office.  
Address : 2425 Amesbury Road - Akron, OH 44313, USA  
E-mail : Jeff@hunterpure.com  
Tel : + 1 330 805 4414  
Mobile : +1 330 801 6766  
Fax : +1 330 805 4414

## Canada Office

Address : Toronto, Ontario, Canada  
E-mail : khmile@lprglobal.com  
Tel : + 1 905 370 0410  
Fax : +1 416 572 3736

## Iran Office

Address : No.11, Second floor, Build, NO.382, Moalem  
Blvd. Yaft Abad, Tehran-Iran  
E-mail : info@bfgco.com  
Tel : +9821 66211 994  
Fax : +9821 6629 6919

## DUT Middle East & Africa

P.O. BOX NO : 95259  
DUBAI - UAE  
maxintldubai@gmail.com  
Tel : +971 6 744 6827  
Mobile : +971 50 1799939

**DUT KOREA**  
Solution for Polyurethane

Copyright 2021. DUT Korea Co., Ltd. All right reserved.