

HANA Hydraulic

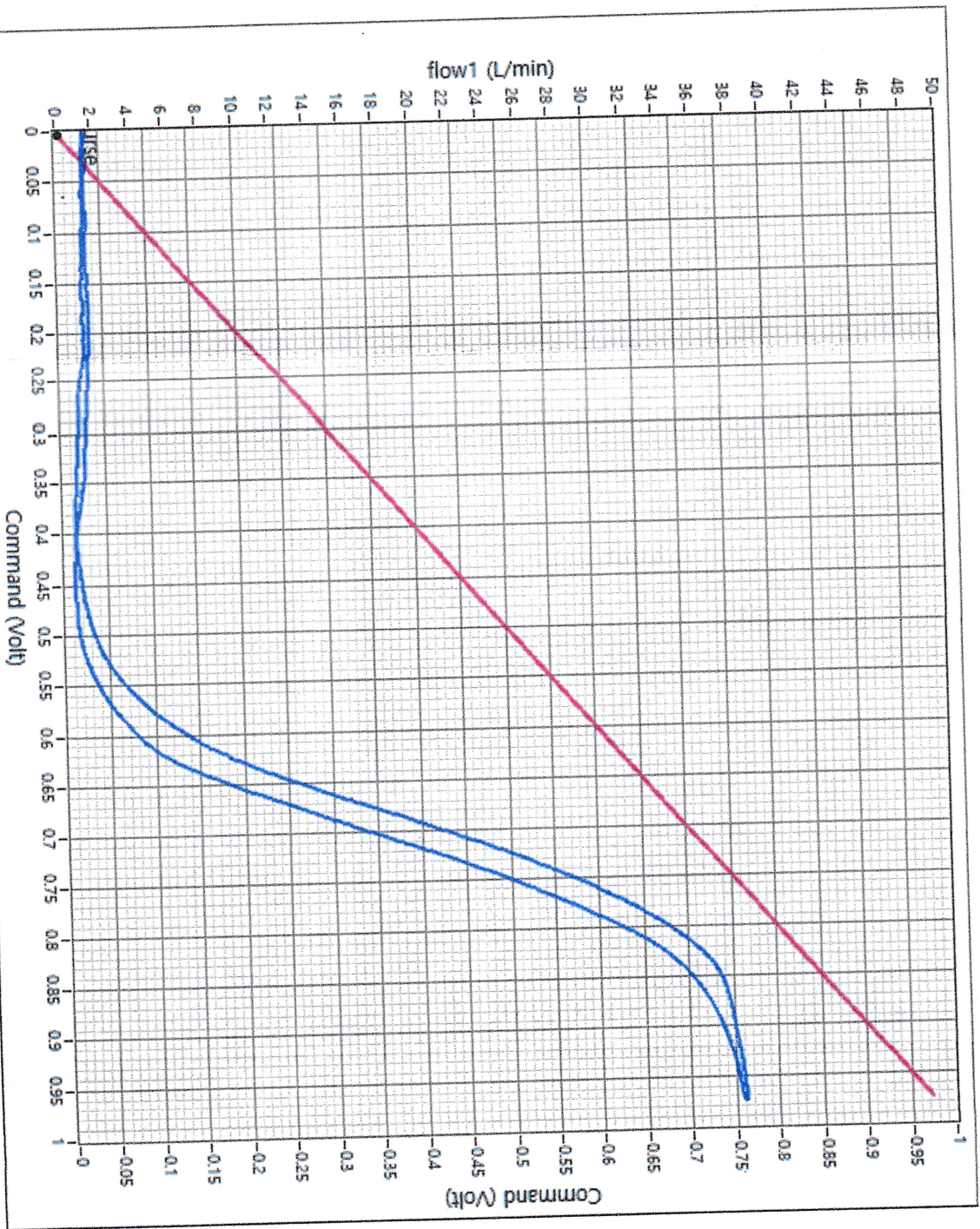
Test protocol

Legend :

Command	axis X	axis Y
0~1V		
FEEDBACK		
FLOW1		40 L/MIN
Pressure A (MA)		
Pressure B (MB)		

note :

type : FESX40CA-1X/500LZ4M
 mat.nr : 0811402620 lot nr : 10504
 Order no



range of Command : 0~1V
 input pressure (bar) : 100
 oil temperature : 40 °C

client :
 date : 2026.02.26
 test engineer