

Reflow Checker

,



.....	2
.....	3
.....	5
.....	6
.....	7
.....	8
301A_.....	9
SMT.....	10
.....	11
302_.....	18
301A.....	19
.....	20
.....	21
.....	22
.....	23
.....	26
.....	27
.....	29
UI301A().....	32
UI302().....	34
UI301A().....	36
UI302().....	37
.....	38
UI301A().....	41
UI302().....	44
.....	47
.....	48
.....	49

Reflow Checker ?



/ ()



	Windows 95, 98, ME, 2000, XP
	> Pentium2 , > Pentium3 500Mhz
	64MB
	10MB
	1024 * 768 , 16
CD-ROM	2
	RS232C (COM1 COM2) / Bluetooth

1. UI-301_302 CD CD-ROM



2. "Next"



3. "Finish"



4.

Reflow"

"UI-301A_302



5.

가

Web,

“UI301A_302”



(30 ~1)

-
-
-

-
-
-
- 301A

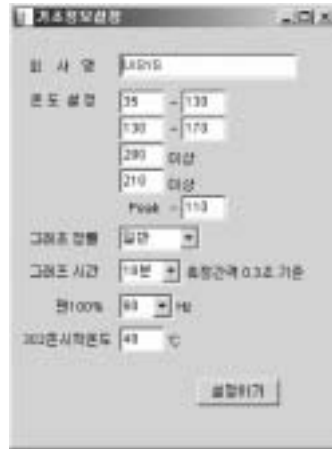
- SMT
-

English

- >

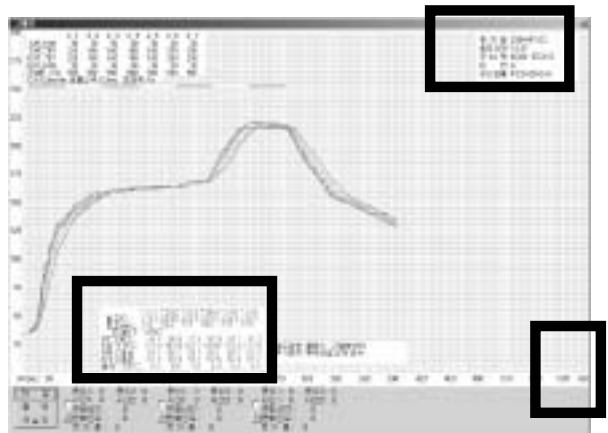
>> >>

->



1. “ >> >> ”
- : 2
- “ ”
2. : 1
1
(1 가
)
3. , 5 , 10 가 2.5
, 5 , 10 3
) 3
2 30
) 5 6 ,
5 1
4. 100% : SMT %
Hz
100% Hz

100%
Fan Hz
302



>> >>

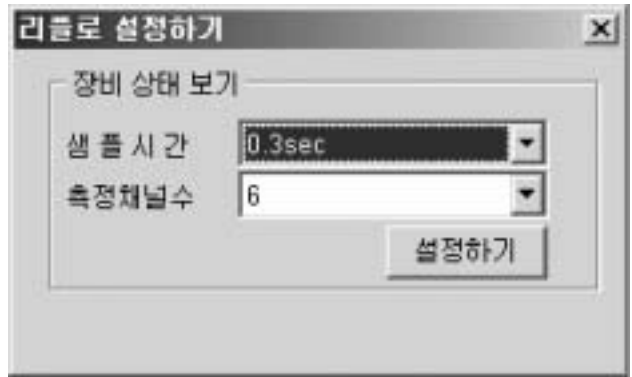
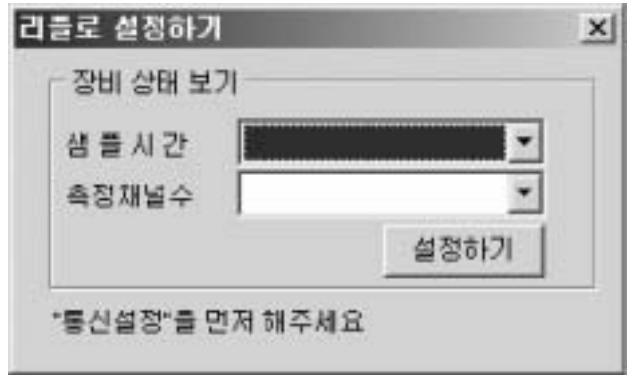
->



- 가
- .
- 가 Off On .
- : COM1 COM2
- [] “
- ” 가
- .
- []
- .

>> >>301A_

->



- | |

- | |

- | |

LED가

- “ ” “ ”

- “ ”

LED가

가

- 가 0.3sec

- 0.3 10

- 5

0.3, 0.6, 1,2, 2.4sec

3~6



>> >>SMT

| |>>[]

->SMT



- “SMT ”

-

- “ ”

“ ”

“SMT ”

가

“ ”

SMT
SMT

SMT

- :
- :
- : SMT
- : SMT
- :
- :
- :
- :
- : Hz, %
- :

가

- : 가
- :
- : 가
- : “SMT ”
- : SMT
- :

>>

>>

->

기본정보입력
□ □ ×

기본정보 입력

회사명: MI

숙정일: 2004-07-23

숙정시간: 12:37

장비명: KOKI-ECHO 불러오기

라인: A

생산모델: PCS-0012-A

장비길이: 4060 mm 0자동

존갯수: 7 개

존별길이: 580 mm/Zone 0자동

속도: 0.9 m/min 전종류 Hz

추가정보

부재원: 몰락스: 고형분10%

부재교및 온도 준수

실행버튼

302_무선수신

301A_다운로드

파일읽기

자료편집

파일저장

그래프

역설저장

시뮬레이션

비교하기

준설정 총길이: 4060

종류	여력	Z1	Z2	Z3	Z4	Z5	Z6	Z7	여력
Fan		30	30	30	30	30	30	30	
TOP		220	180	180	180	180	250	290	
BOT		220	180	180	180	180	250	290	
Fan		30	30	30	30	30	30	30	
LEN		580	580	580	580	580	580	580	

채널별 온도 도달시간 및 유지시간

	Ch 1	Ch 2	Ch 3	Ch 4	Ch 5	Ch 6		
전행온도1	30	130	46.9	36.9	37.8	51.9	44.1	42.0
전행온도2	130	175	159.0	162.9	163.2	154.5	156.0	157.8
계산	190	°도이상	85.2	88.2	89.1	86.1	85.2	84.0
	210	°도이상	52.8	59.4	59.4	52.5	56.4	55.2
냉각	-110		0.0	0.0	0.0	0.0	0.0	0.0

샘플 정보 보기

출샘플수: 1320

샘플간격: 0.3 sec

샘플시간: 396 sec

1분샘플수: 200

채널수: 6

준시작: 30

파일명: C:\Program Files\UISYS\UI301A_302\data\123.3ui

SMT
가

SMT

가

()
SMT

NO	일단	장비명	라인	생산모델
0	1	koki e-1001	A11	핸드프3
1	5	KRT-200	A	핸드로베터라 ...
2	6	koki e-1001	A11	핸드프1
3	7	koki e-1001	A11	핸드프3
4	8	ANTOM	A	Test
5	9	KOKI DR-360	B	Test
6	10	KOKI HR-452	B	Test

기본정보입력

회 사 명 MI

속 정 일 2004-07-23

속정시간 12:37

장 비 명 KOKI - ECHO 불러오기

라 인 A

생산모델 PCS-0012-A

장비길이 4060 mm 0자동

존 갯 수 7 개

존별길이 580 mm/Zone 0자동

속 도 0.9 m/min 팬종류 Hz

SMT
가

기본정보입력

회 사 명 MI

속 정 일 2004-07-23

속정시간 12:37

장 비 명 KOKI - ECHO 불러오기

라 인 A

생산모델 PCS-0012-A

장비길이 4050 mm 0자동

존 갯 수 7 개

존별길이 580 mm/Zone 0자동

속 도 0.8 m/min 팬종류 Hz

SMT

SMT

SMT

SMT

SMT

가

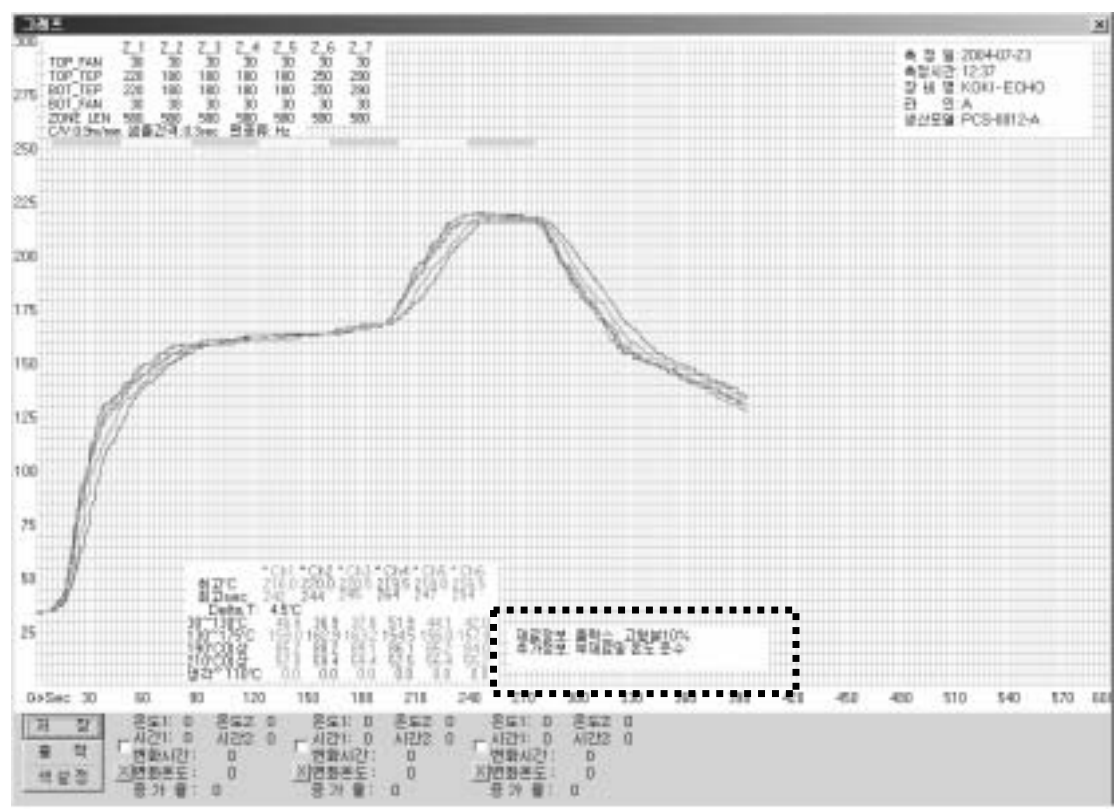
추가정보

부재료 **플락스 : 고형분10%**

부재료및 온도 준수

, 2

가



채널별 온도 도달시간 및 유지시간

진행온도1	35	~	130	Ch 1	Ch 2	Ch 3	Ch 4	Ch 5	Ch 6
진행온도2	130	~	170						
계산	200	C도이상							
	210	C도이상							
냉각		~	110						

채널별 온도 도달시간 및 유지시간

진행온도1	30	~	130	Ch 1	Ch 2	Ch 3	Ch 4	Ch 5	Ch 6
진행온도2	130	~	175	46.8	36.9	37.8	51.9	44.1	42.0
계산	190	C도이상		159.0	162.9	163.2	154.5	156.0	157.8
	210	C도이상		85.2	88.2	89.1	86.1	85.2	84.0
냉각		~	110	52.8	59.4	59.4	52.5	56.4	55.2
				0.0	0.0	0.0	0.0	0.0	0.0

1

2

“ >> >> ”

“ ” “ ”

가



“ ” “ ”

• :
“ ” 가

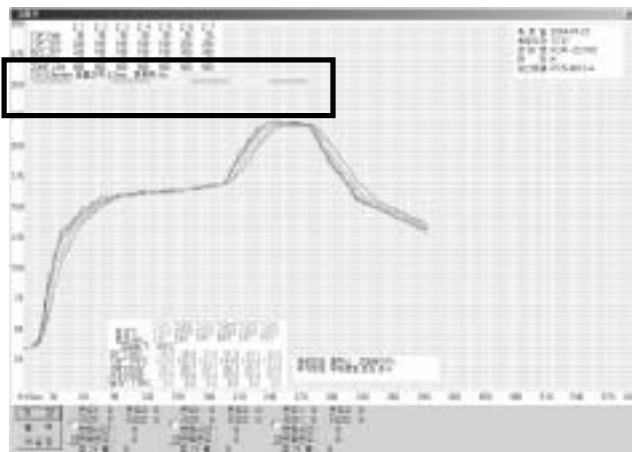
• :
가

• :
가

• 1 :
60 /
0.3 = 200
0.6 = 100
1.2 = 50
2.4 = 25

• : UI301A_302
3~6 가
“ >> >>
”
.(.)

• :
.



• 302_ - ()

• 301A_ (Reflow) - UI301A ()

• - 가 "3ui"

• - 가 , ' 가 , ' ,

• -



"3ui"

• - UI302

• - 301A_ UI301A

• -

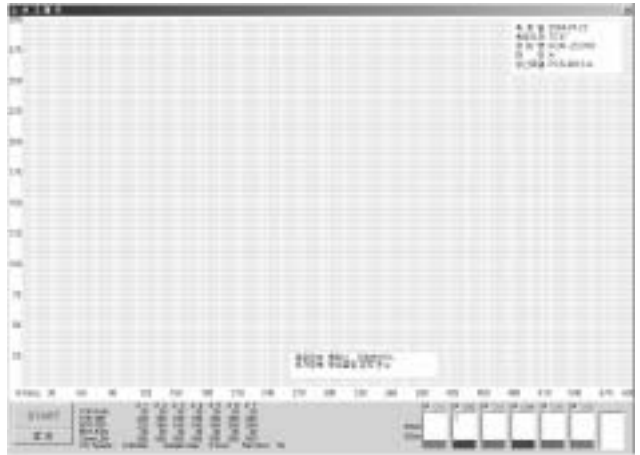
• -

• -

• - 0.3

>> >> >>
[302_]

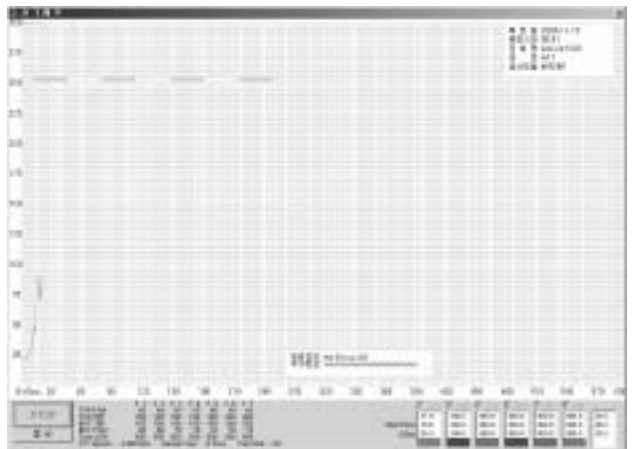
1. "START"
2. 가
->
3. (가)
"ST/ED"
-> 가 가
가
4. "STOP"
5. "ST/ED"
->4,5
6. " "



START

'STOP'

START -> STOP ->



>> >> >>
[]

“3ui”



Windows

>> >> >>
[]

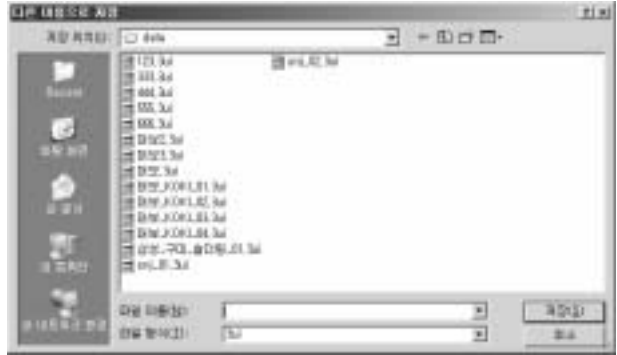


“

”

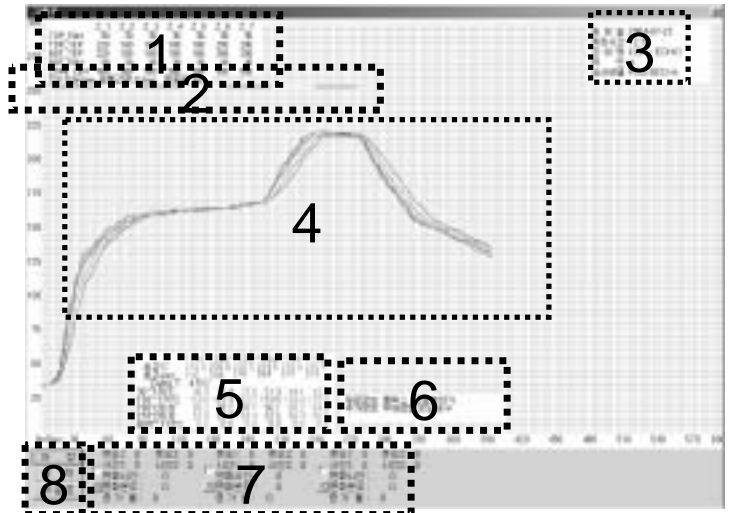
>> >> >>
[]

-
- []
-
- []



Windows

>> >> >>
[]



) “ 1”

1. “ 1”

2. . (가 “ 1” “ 1” .)

3. 2 . (가 “ 2” “ 2”가 .)

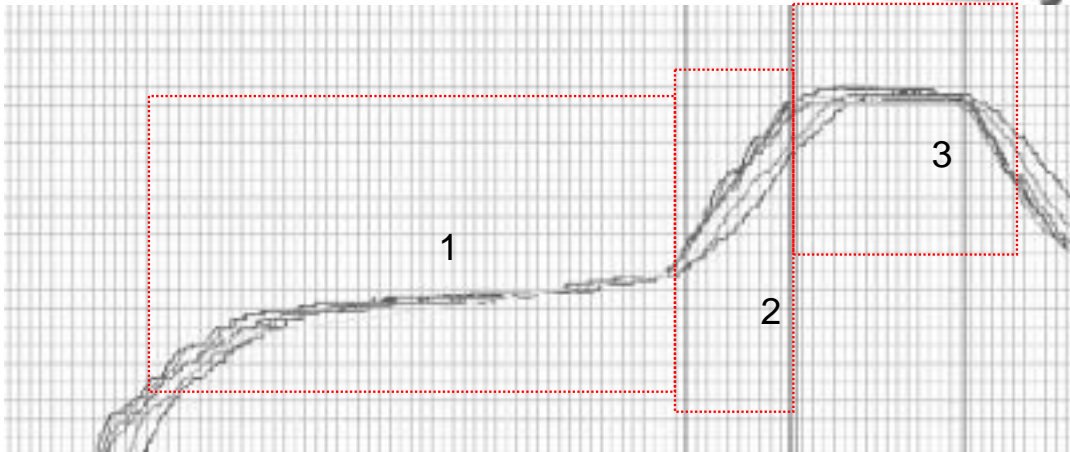
1,2,3 “ , “ 가 ” .

2, 3

1 “ 1” 1

- 1.
- 2.
- 3.
- 4.
- 5.
6. 가
- 7.
- 8.

온도1: 0	온도2: 0	온도1: 0	온도2: 0	온도1: 0	온도2: 0
시간: 0	시간2: 0	시간: 0	시간2: 0	시간: 0	시간2: 0
<input type="checkbox"/> 변화시간: 0		<input type="checkbox"/> 변화시간: 0		<input type="checkbox"/> 변화시간: 0	
<input checked="" type="checkbox"/> 변화온도: 0		<input checked="" type="checkbox"/> 변화온도: 0		<input checked="" type="checkbox"/> 변화온도: 0	
증가율: 0		증가율: 0		증가율: 0	



온도1: 150	온도2: 169	온도1: 177	온도2: 215	온도1: 218	온도2: 217
시간1: 60	시간2: 195	시간1: 201	시간2: 230	시간1: 232	시간2: 280
변화시간: 135		변화시간: 29		변화시간: 48	
X변화온도: 19		X변화온도: 38		X변화온도: -1	
증가율: 0.14 'C/Sec		증가율: 1.31 'C/Sec		증가율: -0.02 'C/Sec	

[]

[]



“ ”

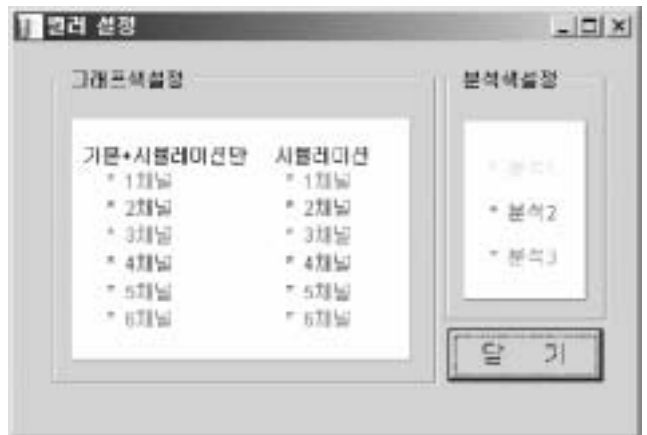
[]

>> >>

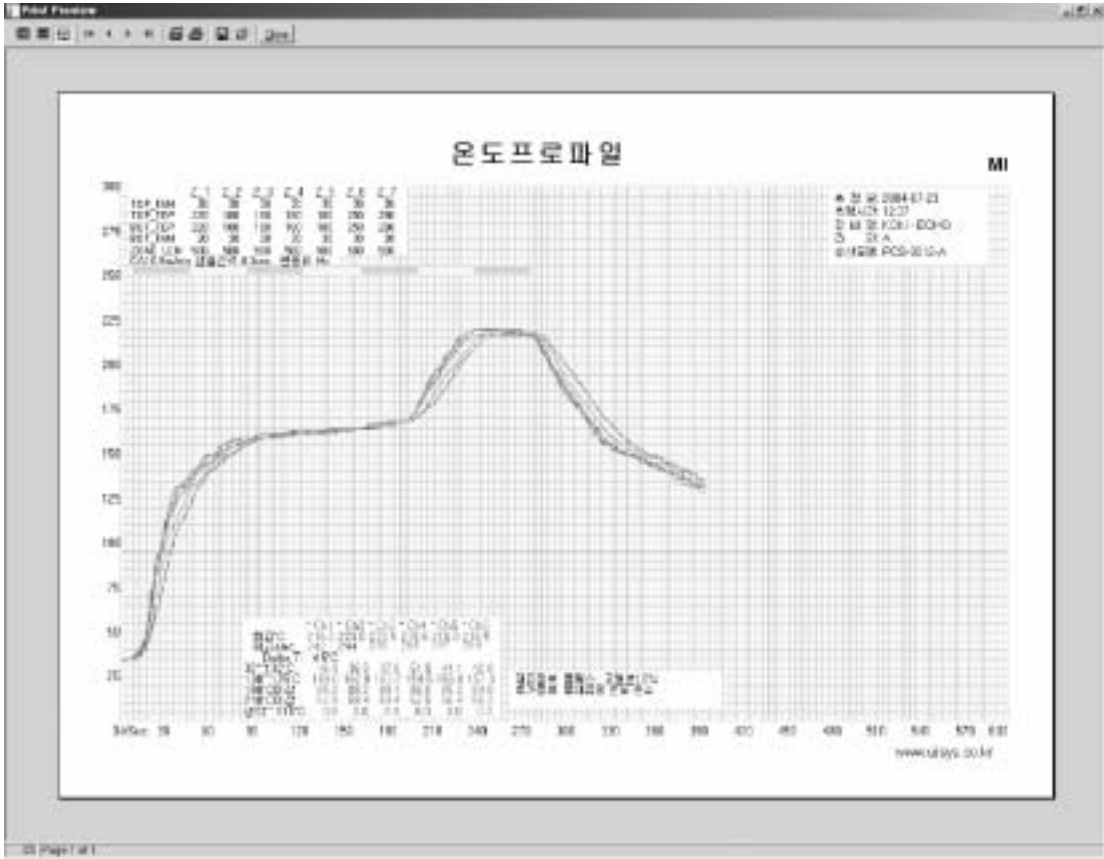
| >>[] >>[]

| >>[]

“ ”



“ ”



“ ”



가

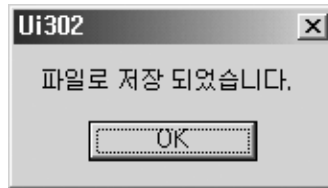
Windows가

“ ”

>> >> >>
[]

가

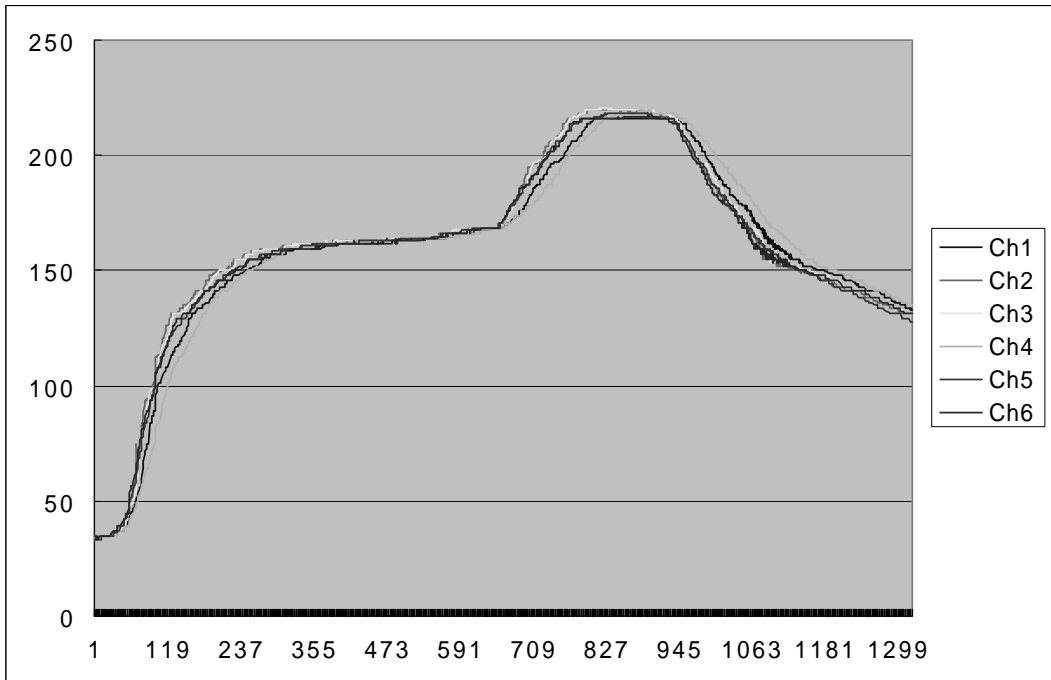
가



Windows

가

가 가



>> >> >>
[]

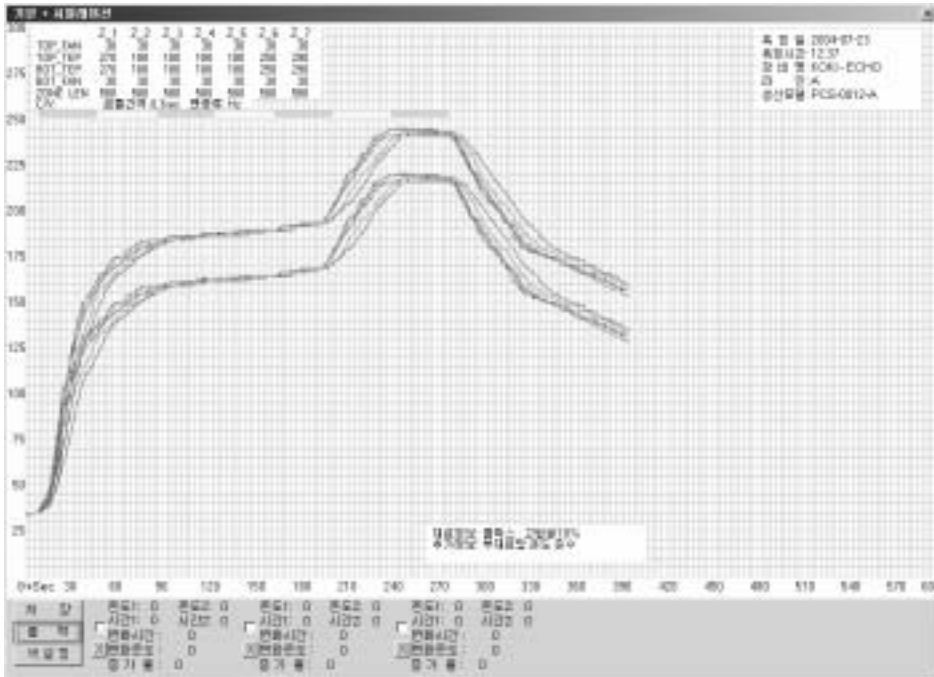
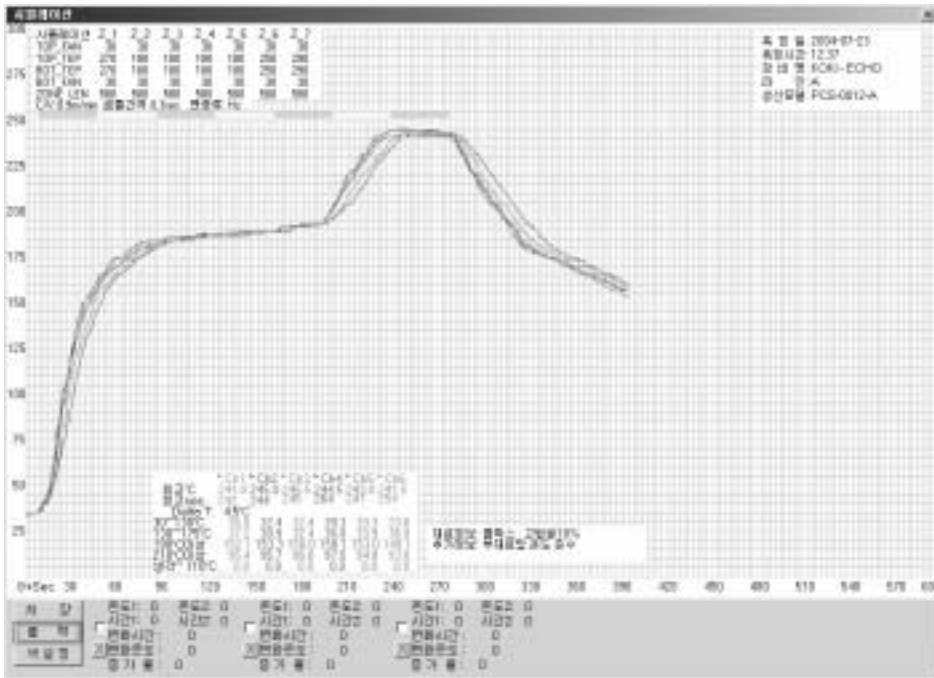
“
”
가



Zone

[]

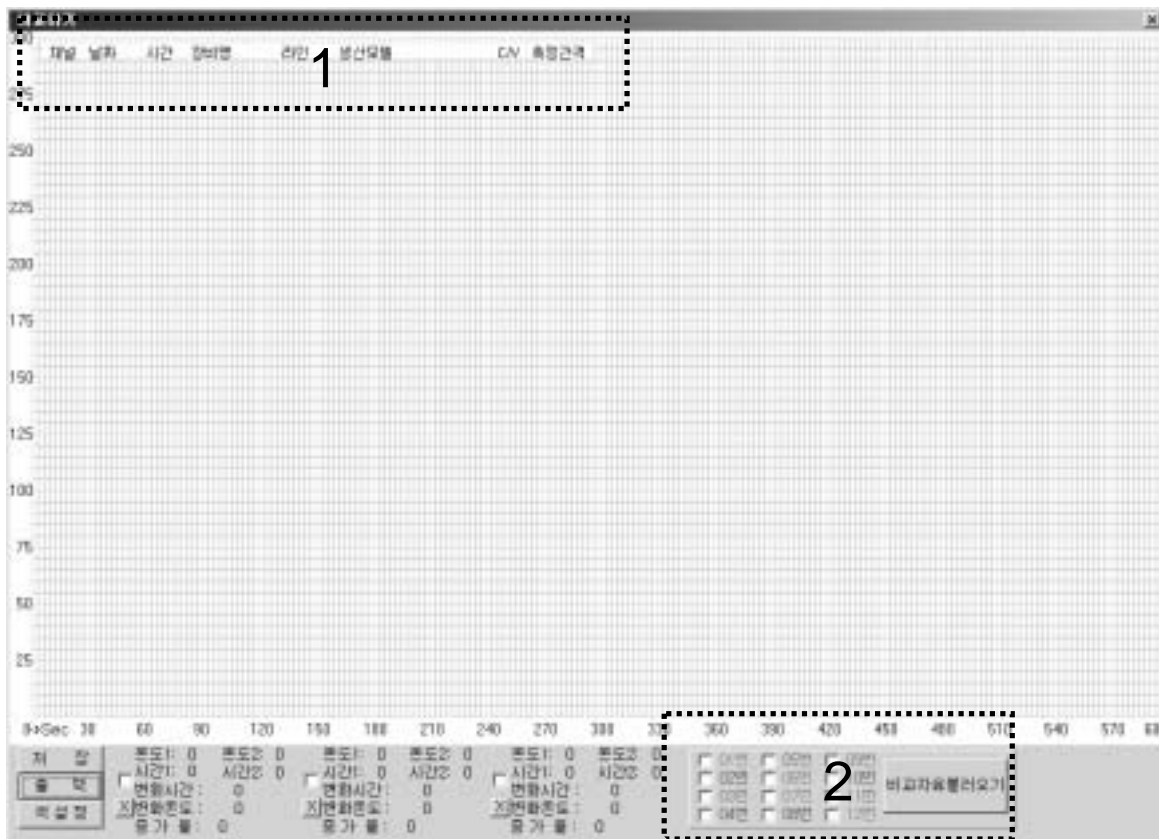
[+]
+



+

>> >> >>

[]



1.

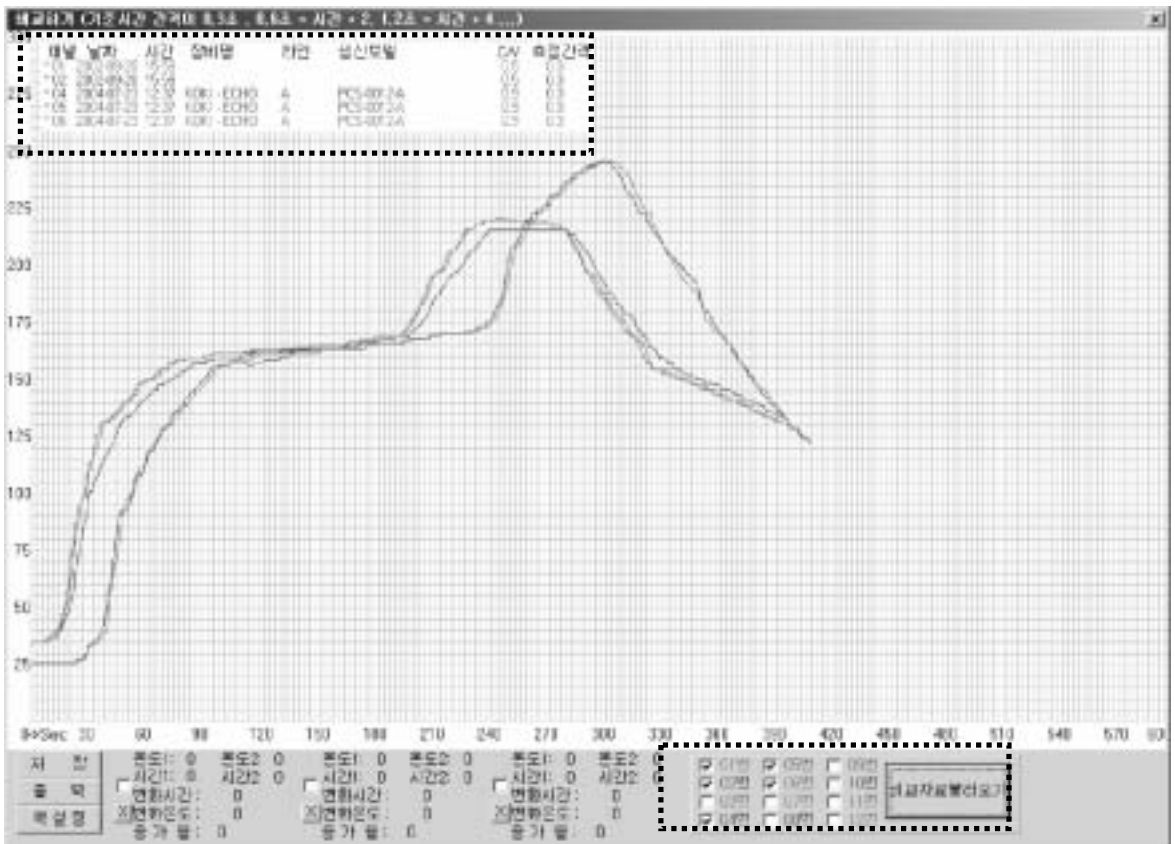
2.

[]

[]

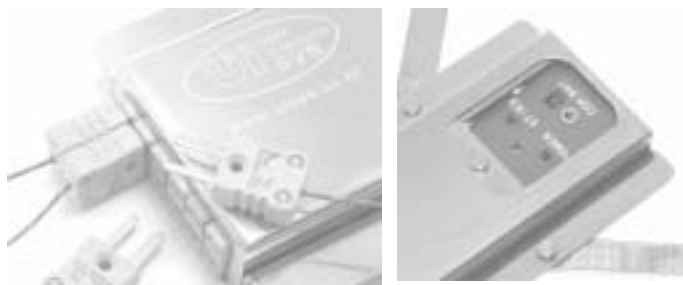
>> >> >>
[]>>[]

[]





Reflow Checker ?



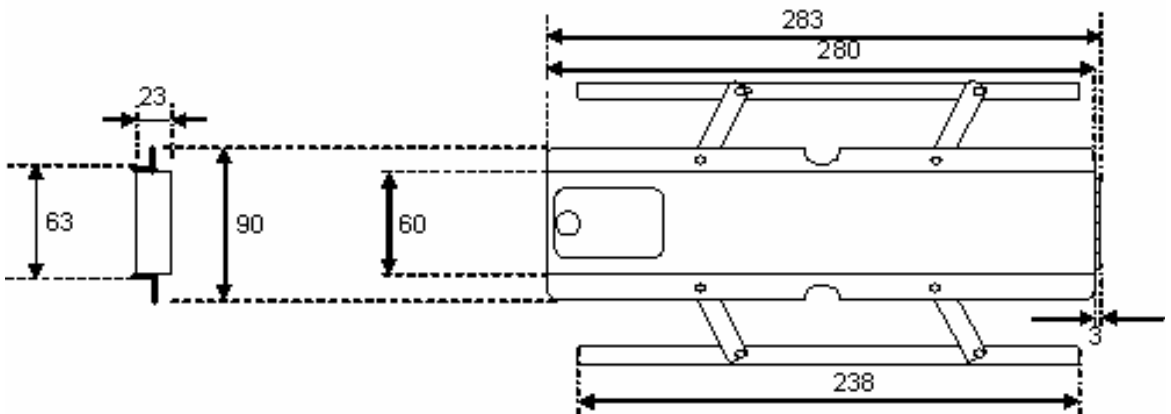
Reflow

5 가 EEPROM
60ms MCU

A/S

	K	0 ~ 300	± 2
		0.3, 0.6, 1.2, 2.4	
		0.3 = 10 , 80	
		5	

	6V
	: 15 ()
/	0~300 / 0~50
	280 X 60 X 23 // 298 X 90 X 23





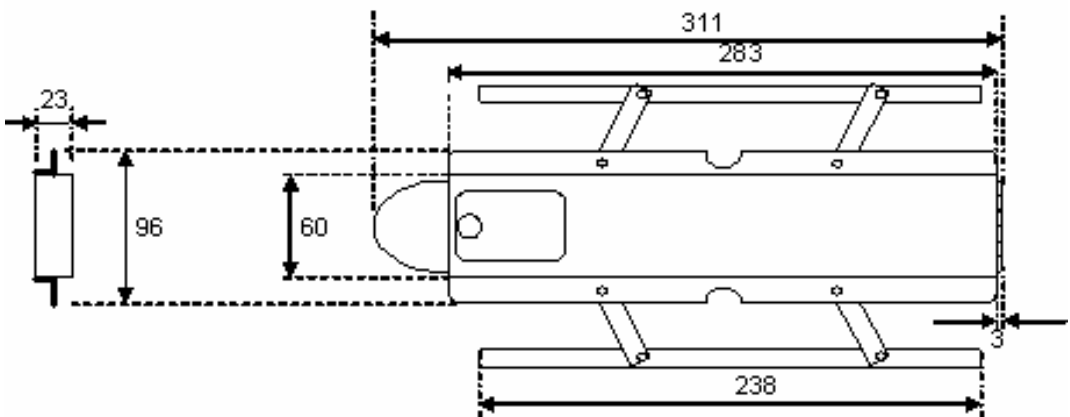
Reflow

60ms

A/S

	K	0 ~ 300	± 2
		50ms 300ms	
		10	
		Bluetooth / 100m	

	6V
	: 10 ()
/	0~300 / 0~50
	311X 60 X 23 // 311 X 96 X 23





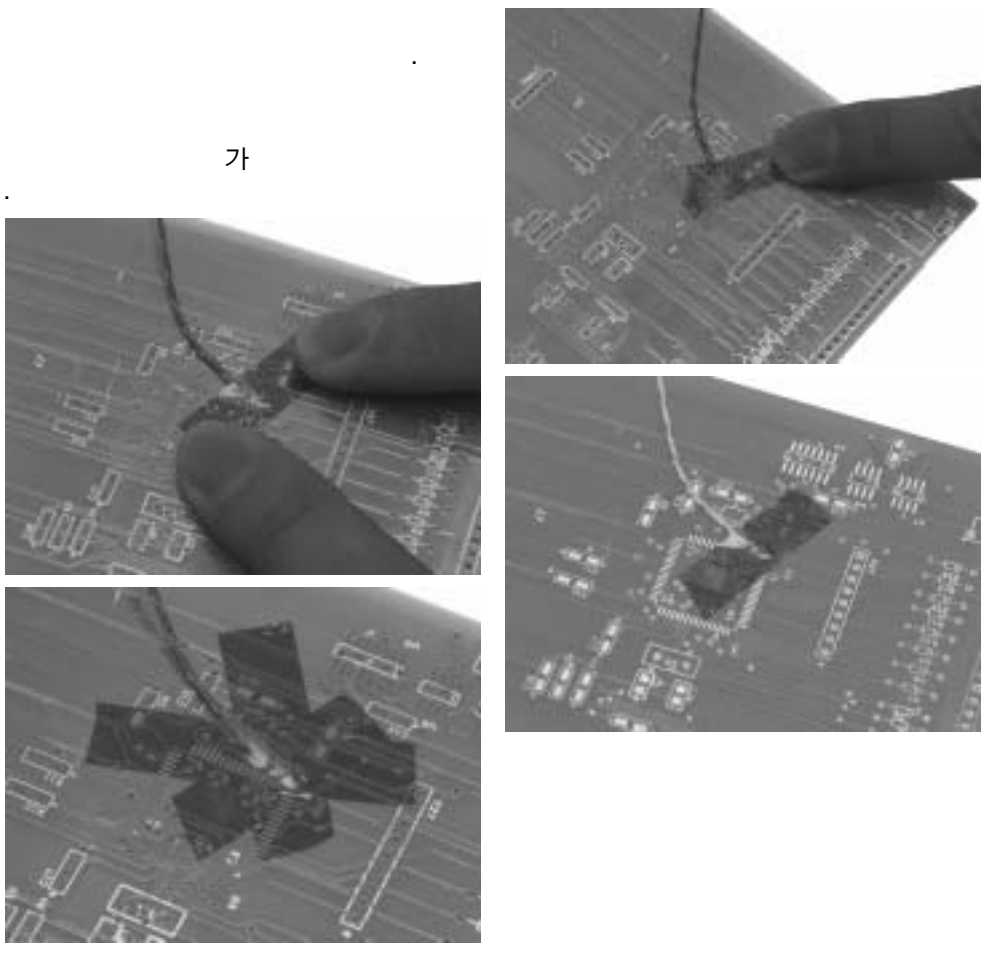
- ON/OFF
- Push /
- Push
- LED
- : ON
- :
-
- > ON ()
- > ()



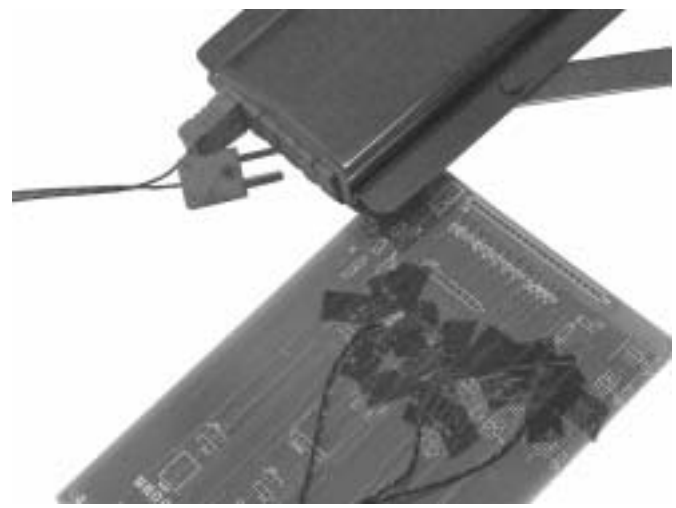
- ON/OFF
- Push / ()
- Push
- LED
- : ON
- :
- :
-
- > ON ()
- > ()



가



- Reflow Chain



- 가

- . (Reflow 가 25mm)

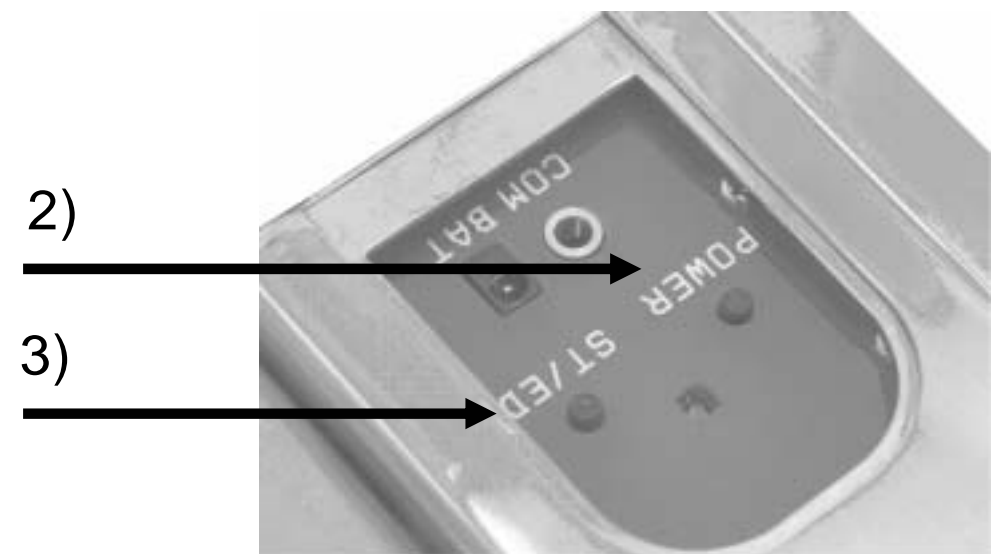
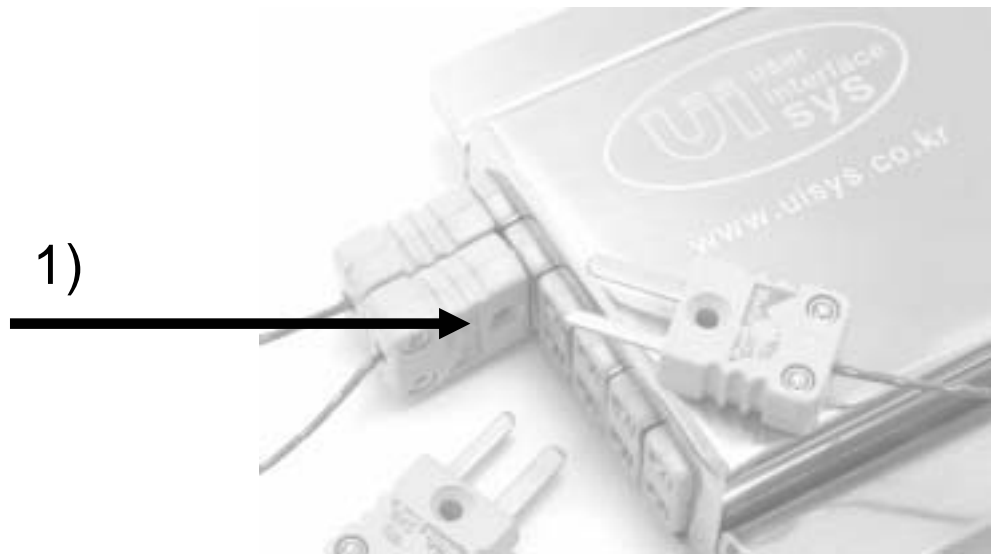


- Off
- 10 Off
- 가





1. UI301A
2. .
3. 가
- 가 .
(SMT)
4. 가
-
5. UI301A on .
6. .
7. .
8. Off .
- 9.
- 10.
- 11.
- 12.
- 13.



- 1) . (A,B,C,D,E,F)
 - 2) Power On .
 - 3) ST/ED .
 - 4) ST/ED .
- Power
- Off On

1)



2)



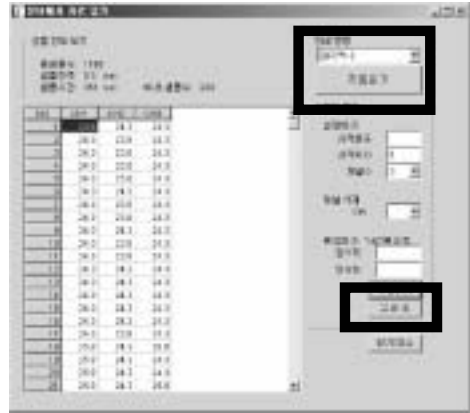
ON

->

3)



4)



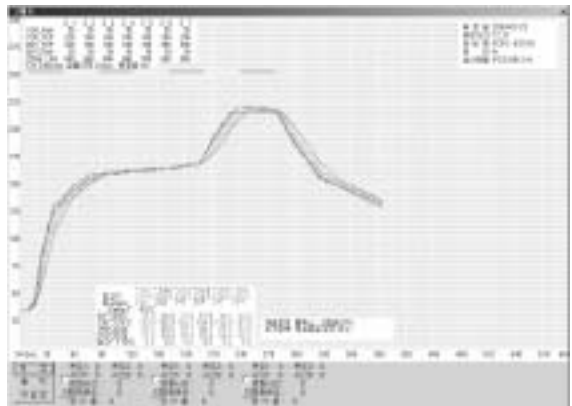
->

(가)

301A_

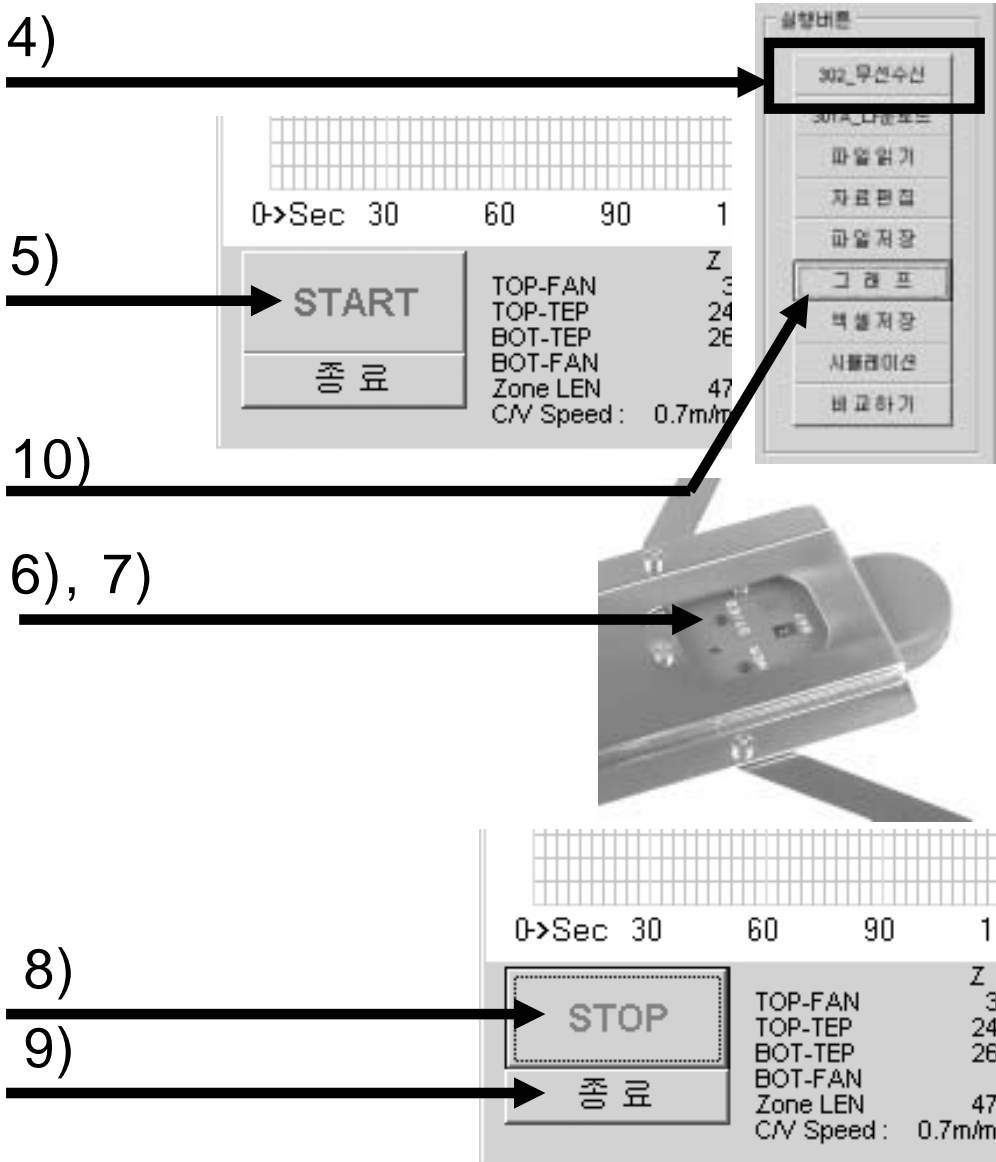
가

0.3





1. .
2. 가
- 가
(SMT)
3. 가
-
4. 302_ “START” .
5. UI302 on .
6. UI302 “ST/ED”
-> 가 .
7. OFF .
8. “STOP” “ ” .
- 9.
- 10.
- 11.
- 12.
- 13.



- 4) 302
- 5) START
- 6) (, STOP)
- 7) (ST/ED)
- 8) STOP
- 9)
- 10)



Q. 가 ?

- >>

- Windows95, 98, Me msi 가 가

- CDROM

1) "program files \ UISYS" "C: \ UISYS"

2) "C: \ UISYS \ UI-301A_302 \ UI302.exe" 가

3) 가

Q. ?

-

- () (가)

Q. (, ?)

- ?

- 가 32bit

-

- () 2001

Q. 가 ?

- 1024*768

-

Q. ?

-

-

-

- () (가)

- ON

- 4가 가

A/S

-

<http://www.uisys.co.kr> " >> "

- <http://www.uisys.co.kr> “ >> ”

IT Center 104
TEL) 031 - 691 - 7686
FAX) 0505 - 330 - 2201
<http://uisys.co.kr>

