

**CO<sub>2</sub>** *CMA1325CGH*  
*Laser Cutting Machine*

*Large format CO<sub>2</sub> laser cutter*

**PRODUCT INTRODUCTION**

## ABOUT US

GD HAN' S YUEMING LASER GROUP CO., LTD , a subsidiary of Shenzhen Han' s Laser Technology Co., Ltd( stock code:002008), is a hi-tech enterprise which manufactures laser machines and focuses on Research & Development plus selling of industrial laser products. Located in Songshan Lake Hi-tech Industrial Development Zone, Han' s Yueming Laser has developed steadily and benefits by the diverse IT and Hi-tech human resource in Guangzhou, Shenzhen, Hong Kong. Yueming has established modern factories in Dongguan, Shanghai Suzhou and Xuzhou with over 100 automated and high precision processing equipment, total floor area of 110,000 square meters and with more than 500 well trained workers, including 6 young optics experts, 33 researchers with master degree and 86 engineers with bachelor' s degree.

Han' s Yueming Laser sticks to its motto of 'win the market with advanced technology, reward customers with best service' . We believe in the enterprise spirit "Cooperation, Win-win, appreciation and sharing" , and continuously attract top talents with sophisticated laser technique to join us. Han' s Yueming Laser is the leading laser machine manufacturer in China, it has launched 10 series products and has reached 10,000 sets annual production capacity. With the integration of advanced laser technology, perfect quality management system and convenient after-sales service network in mainland China and global market, Han' s Yueming Laser enjoy the strengths of strong international competitiveness, it is your trustworthy partner for long term cooperation.



# CERTIFICATION

**Certificate of Registration**

**Intertek**

This is to certify that the quality management system of

**GD Han's Yueming Laser Technology Co., Ltd.**

No. 28, East Industrial Road, Songshan Lake High-Tech Industrial Development Zone, Dongguan City, Guangdong Province, P.R. China

has been assessed and registered by Intertek as conforming to the requirements of

**ISO 9001: 2008**

The quality management system is applicable to:

Design, production and sales of laser equipment laser power up to 10kW (laser cutting machine, laser engraving machine, laser marking machine).

Organization Code: 6824B938-3  
Certificate Number: 0559069  
Original Issue Date: 08 December 2005  
Certificate Issue Date: 11 December 2014  
Certificate Expiry Date: 09 January 2018

**Attestation of Conformity**  
No. MSA 14 10 86257 603

**Holder of Certificate:** GD HAN'S YUEMING LASER TECHNOLOGY CO., LTD.  
No. 28 East Industrial Road, Songshan Lake High-Tech Industrial Development Zone, 517000 Dongguan Guangdong PEOPLE'S REPUBLIC OF CHINA

**Product:** Laser cutting machine

**Model(s):** CMA1610-FET-CAN, CMA1610-FET-CAN, CMA2010-FET-CAN

**Parameters:** Rated input: 330.040VAC, 5500W; P-IN-FIE 2400W

**Tested according to:** EN ISO 11553-1:2008  
EN 60204-1:08:2009  
EN 60204-1:2007

This Attestation of Conformity is issued on a voluntary basis according to Council Directive 2006/42/EC relating to machinery. It confirms that the tested equipment (see Annex IV equipment) conforms with the essential protection requirements of the directive. It refers only to the sample submitted to TÜV SÜD Product Service GmbH for testing and certification. See also notes enclosed.

Test report no.: 948041304032  
Valid until: 2016-10-10

Date: 2014-10-13 (Wu Zhang)

After preparation of the necessary technical documentation as well as the EC declaration of conformity the required CE marking can be affixed on the product. Other relevant directives have to be obtained.

Page 1 of 1

TÜV SÜD Product Service GmbH | Dertisstraße | Biberach an der Riß | 88539 Biberach | Germany

**国家火炬计划重点高新技术企业证书**

经评选，广东大族粤铭激光科技股份有限公司

为国家火炬计划重点高新技术企业

批准文号：国科火字〔2013〕256号

No. GZ2013400008

**FDA**

**VERIFICATION OF MD & LVD COMPLIANCE**

**OMA Testing Certification**

Certificate No. OMA/09128821

APPLICANT: DONGGUAN HAN'S YUEMING LASER TECHNOLOGY CO., LTD.

Address of Applicant: NO. 28, EAST INDUSTRIAL ROAD, SONGSHAN LAKE INDUSTRIAL DEVELOPMENT DISTRICT, DONGGUAN CITY, GUANGDONG PROVINCE, CHINA

Product Description: LASER CUTTING (DRAWING) AND MARKING MACHINE

Type and Model: CMA SERIES, PN SERIES, YMG SERIES, FLM SERIES, YMBE SERIES, YMBE SERIES

Technical Construction File Reference No./Rev: CE041738661

EN ISO 12890-1:2009; EN ISO 12100-2:2003  
EN 60204-1:2006; EN ISO 14120:1997  
EN 60204-1:1996; EN 30002-4:2006

Date of Issuance: Dec 30, 2009

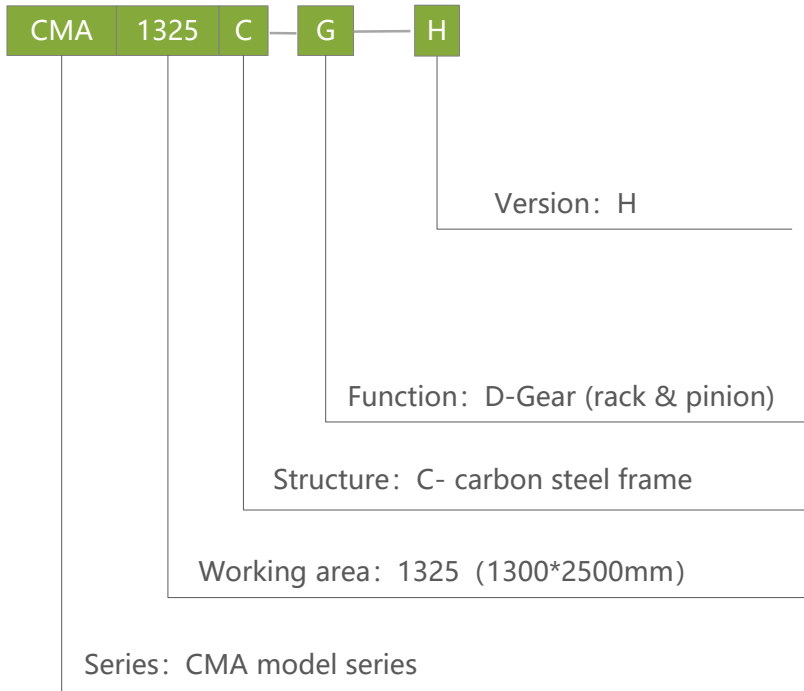
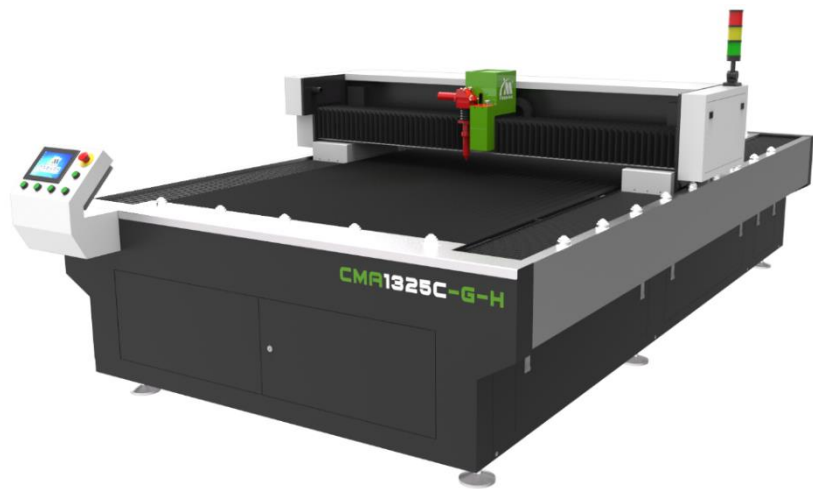
Remarks: This Certificate is Only valid For The Equipment And Configuration Described And In Conformity With The Test Data Listed Above.

Conclusion of Assessment: We hereby Confirm That The Technical Construction File And Manufacturing Inspection And Testing Processes For Above Mentioned Equipment Comply With The Essential Safety Requirements Of EU Machinery Directive 2006/42/EC & 2004/95/EC Low Voltage Directive Applied Codes And Standards.

Chief Assessor: [Signature]

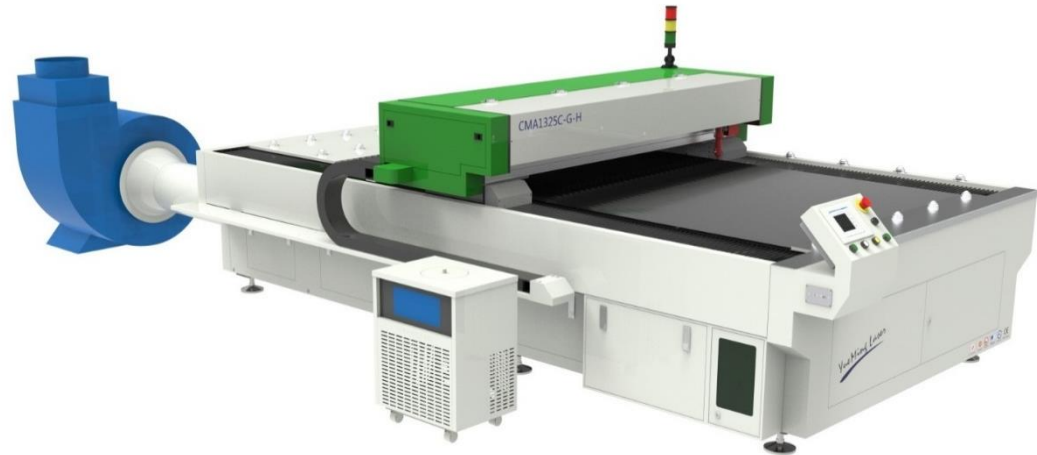
OMA Certification & Testing Services Ltd  
OMA Certification & Testing Services Ltd  
75 New Road Street, London SE16 5JH  
02037042100

## PRODUCT MODEL INSTRUCTIONS



## Machine Features

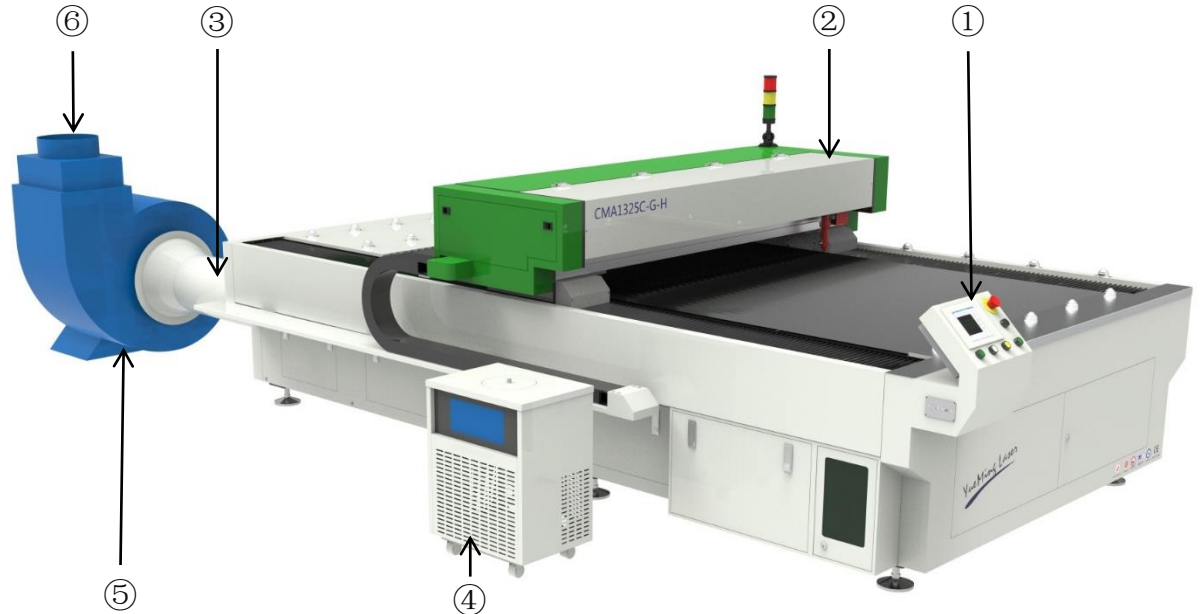
NO.	Introduction
1	rack & pinion + Servo motor dual driver, high speed, maintenance free,
2	integrated aluminum alloy beam, one-time molding
3	overall steel frame welding, stress relief and annealing
4	compatible for lens with different focus length, flexible to change based on different materials
5	glass laser tube or metal laser tube are all optional



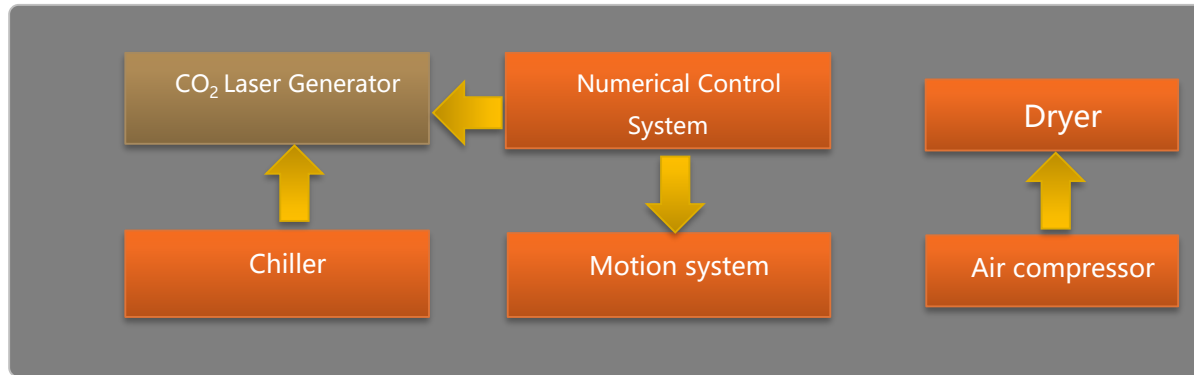
<b>Item</b>	<b>CMA1325C-G-H</b>
<b>Effective Cutting Area (length×width)</b>	1300mm×2500mm
<b>Laser Power</b>	130W~350W(optional)
<b>Laser Generator</b>	Rofin SR series CO <sub>2</sub> generator ( 15i, 25i ) 、 CO <sub>2</sub> glass laser tube
<b>Transmission</b>	Gantry + rack & pinion + dual driver
<b>Positioning Speed</b>	45m/min
<b>Accelerated Speed</b>	0.5G
<b>Max. cutting Speed</b>	18m/min
<b>Location Precision</b>	±0.2mm/1000mm
<b>Repeated Location Speed</b>	±0.1mm/1000mm
<b>Cooling Method</b>	Water cooling
<b>Working Environment</b>	Temperature: 0-40°C; Density ≤80%, no condensation
<b>Gross Power</b>	10KW
<b>Power Supply</b>	220V ( Auxiliary Machine: 380V ) /50Hz
<b>Weight</b>	1.8T
<b>Dimension (length x width x height)</b>	3850mmx2190mmx1250mm

# Machine Constitution

NO.	Introduction
①	Operation Platform
②	Machine body
③	Upper exhaust pipe (length 3m)
④	Chiller
⑤	Blower
⑥	Blower flange and external metal air hose (prepared by customer)



# Control Mechanism



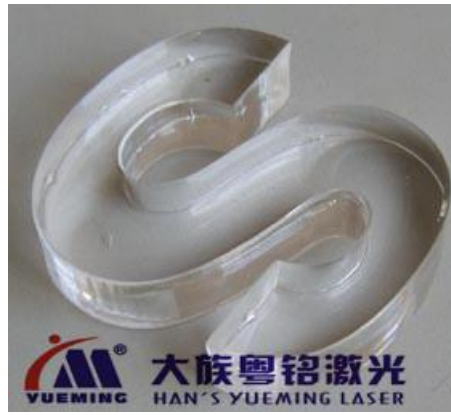
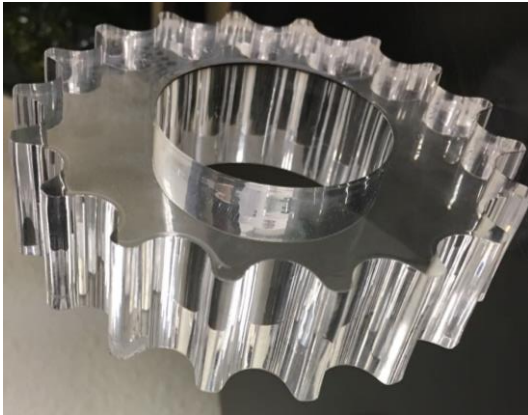
## Configuration-1

	NO.	Name	Description	Brand
<b>Machine</b>	1	Laser generator	CO <sub>2</sub> laser generator	China/Germany
	2	Laser power	130W standard、250W/350W optional	China/Germany
	3	High rigidity standard chassis	Intensive chassis, heavy gantry milling, secondary annealing	Han's YM
	4	Transmission system	Rack & pinion dual driver	Han's YM
	5	Cutting component system	Manual laser cutting head	Han's YM
	6	Focus lens	Φ25.4/F=76.2mm or 127mm	USA
	7	Reflection mirrors	Φ38.1*4	USA
	8	Beam	Cast aluminum alloy, finite element optimization	Han's YM
	9	Rack	Imported grind precise rack	Taiwan
	10	Straight rail	Imported precise heavy load	Taiwan
	11	Servo motor	750W	Taiwan
	12	Reducer	Planetary	France Motovario
	13	Strip	Hollow strip	Han's YM
<b>Control System</b>	14	Operation Software	SmartCutting STD	Han's YM
	15	Electrical control system	Main electrical parts are Siemens and Schneider	Germany
Auxiliary Machine	16	Chiller	Water cooling system	Teyu
	17	Exhaust fan	380V/50Hz/3.0KW/2900rpm	

# Applications & Samples

Applicable Industries:

Materials such as Acrylic, MDF, Plywood



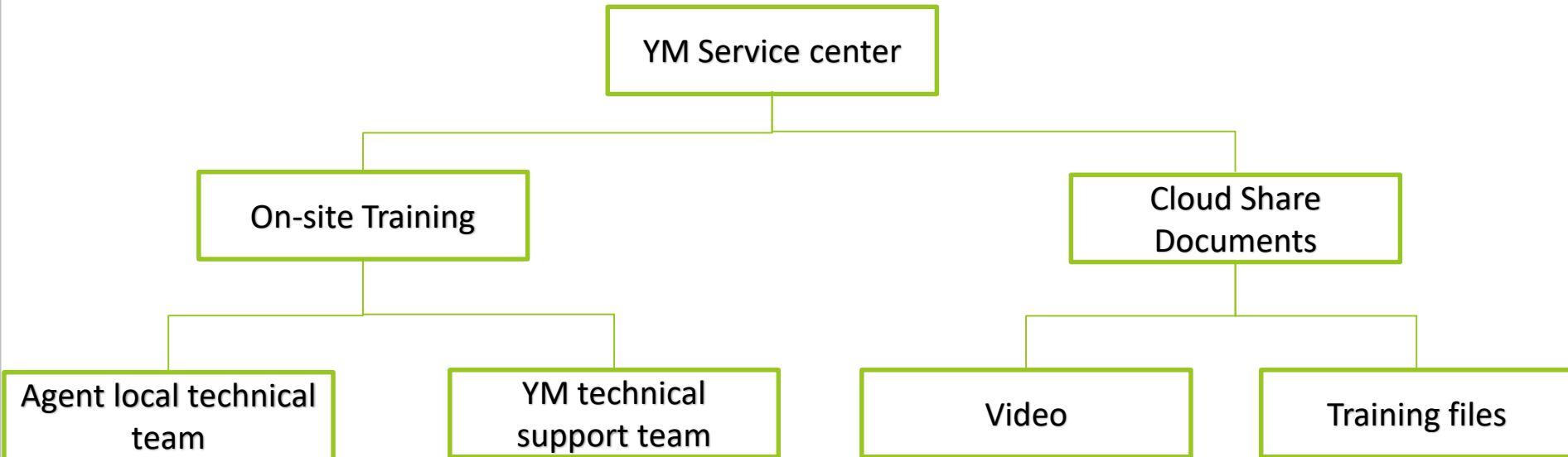
## SERVICE

**Technical strength:** demand research, technical Seminar, laser application testing and samplings service;

**Technicians support:** 168 domestic technicians, 22 oversea technicians, 5 online engineers, 8:30am~22:30pm online support;

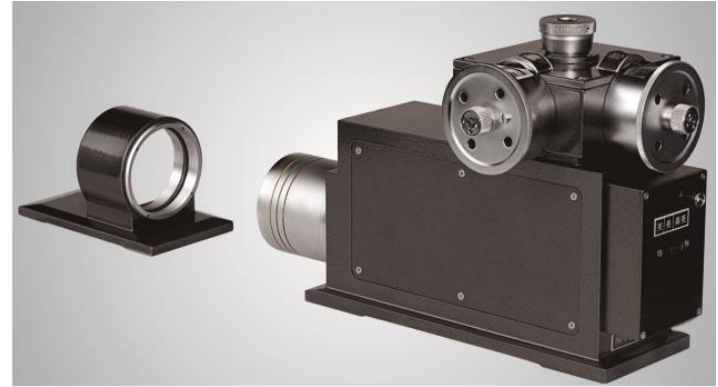
**Nearest service:** 50 sales & service domestic offices, and 38 oversea agents;

**Free Training:** 5 days in factory free training (accommodation and food free)





OPTODYNE Laser interferometer (USA)



Dual-direction Autocollimator



Adopts coordinate measuring machine to guarantee spare parts precision

# Cooperation Win-win Appreciation Sharing

广东大族粤铭激光集团股份有限公司

GD HAN'S YUEMING LASER GROUP CO., LTD.

Add: No.28 East Industrial Road, Songshan Lake, Dongguan, Guangdong, China  
(523808)

Mob: +86-188-26950666

Tel: +86-769-22705851

Fax: +86-769-8983 22703894

Website: [Http://www.yueminglaser.com](http://www.yueminglaser.com)

Email: [henry@ymlaser.com](mailto:henry@ymlaser.com)