

**SEWOOD**

**세우전자**

SEWOOD ELECTRONIC MFG. CORP.

**ADDRESS**

경기도 고양시 일산동구 장진천길 88-3

TEL : 031-967-1544 FAX : 031-967-1543 E-MAIL : [sewoo@eng7.co.kr](mailto:sewoo@eng7.co.kr) HOMEPAGE : [www.eng7.co.kr](http://www.eng7.co.kr)

88-3, Jangjincheon-gil, Ilsandong-gu, Goyang-si, Gyeonggi-do, Republic of Korea

TEL : +82-31-967-1544 FAX : +82-31-967-1543 E-MAIL : [sewoo@eng7.co.kr](mailto:sewoo@eng7.co.kr) HOMEPAGE : [www.eng7.co.kr](http://www.eng7.co.kr)

Copyright © April 2018 SEWOOD ELECTRONIC MFG. CORP. All Right Reserved

**SEWOOD**  
[www.eng7.co.kr](http://www.eng7.co.kr)







**SEWOO**

# High-Frequency Welding Machine

## About Us 회사소개

Sewoo Electronic Manufacturing Corporation is a manufacturer in Korea, who has been developing and producing the Industrial High Frequency Welding Machines and Automation Machines since its establishment in 2007.

The high frequency welding machines manufactured by us are used to produce various products such as blister packing, medical products, swimming pool, advertizement(billboard), tent(tarpaulin), labels including car interior materials, various air products, and other household items.

Based on these long experience and technology, Sewoo Electronic is newly jumping up to be a global leader in the field of world high frequency welding machines market.

Please be with the Sewoo Electronic growing with global customers.

Thank you!

**Jae-hoon Choi** / President of Sewoo Electronic Mfg. Corp.

세우전자는 2007년에 설립한 제조업체로, 산업용 고주파용착기계 및 자동화기계를 개발 · 생산하고 있습니다.

세우전자에서 제작한 고주파용착기계는 각종 에어용품과 다양한 생활용품을 포함하여, 자동차 내장재, 블리스터 포장, 의료용품, 간이 수영장, 대형 현수막, 천막(타포린), 라벨 등 다양한 분야의 제품생산에 사용되고 있습니다.

세우전자는 앞으로도 최고의 품질과 경쟁력 있는 가격으로 고객이 만족하는 기계를 제공하도록 최선을 다하겠습니다.

감사합니다.

세우전자 대표 최재훈



# High-Frequency Welding Machine

## What is High Frequency Welding Machine? 고주파용착기계란?

The High Frequency Welding Machine is a combination of the high frequency oscillator and the press, and the material is welded as the high frequency energy produced from the oscillator is supplied to the electrode, and the pressure is applied by the press. The principle of this is not a welding by the separate heater system or heat, but the inside of material is heated and welded by the vibration of the molecules of material with dielectric constant.

The high frequency oscillator is manufactured with various outputs of 5kw, 7kw, 10kw, 15kw ~ etc. for the frequency of 27.12MHz or 40.68MHz.

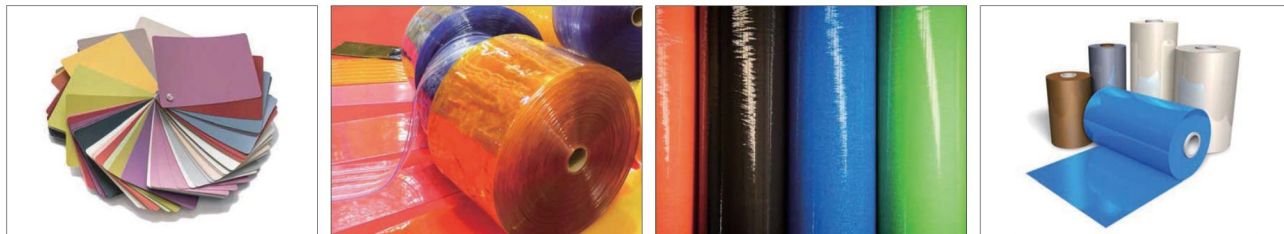
The output of the oscillator and the press type are decided to fit the quality, size, thickness, shape, work method etc. of the product produced by consumers. And there are pedal type, slide type, welding-cutting type etc. with which production of product is convenient and the product of good quality may be produced.

고주파용착기계는 고주파 발진부와 프레스가 결합된 형태로, 발진부로부터 생산된 고주파에너지가 프레스의 전극에 공급되어, 프레스가 압력을 가함으로 소재가 용착되는 기계입니다. 이것은 별도의 히터장치나 열에 의한 용착이 아니고, 유전율이 있는 소재 자체 분자들의 진동으로 인해 소재 내부가 발열되어 용착되는 원리입니다.

고주파 발진부는 27.12MHz 또는 40.68MHz의 주파수에 5kW, 7kW, 10kW, 15kW~ 등 다양한 출력으로 제작됩니다. 발진부의 출력과 프레스 타입은 소비자가 생산하는 제품의 재질, 크기, 두께, 모양, 작업 방식 등에 맞게 결정됩니다. 또한 페달타입, 슬라이드 타입, 용착·커팅 타입 등 이 있어 제품 생산이 편리하고 양질의 제품을 생산할 수 있습니다.

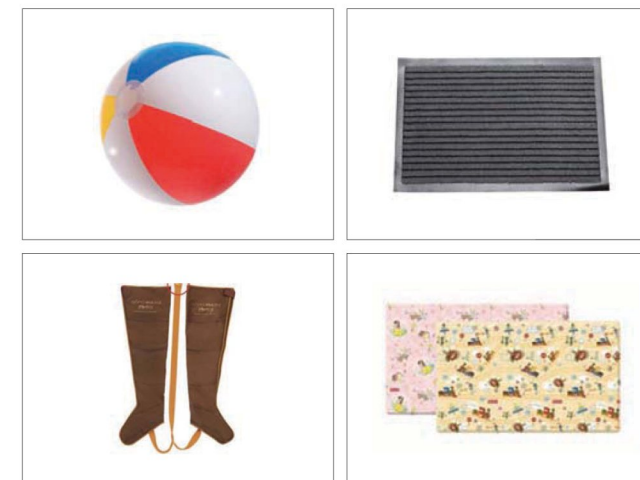
## What is High Frequency Welding Materials? 고주파용착소재란?

PVC, PU, TPU, PEVA, EVA, PETG etc.



## Introduction of products produced by use of the High Frequency Welding Machine 고주파용착기계를 이용해 생산한 제품의 소개

1. Various Air Products (Tube, Beach Ball, Air Boat, Air Mattress etc.)  
각종 에어용품( 튜브, 비치볼, 에어보트, 에어 매트리스 등)
2. Various Living Goods (Raincoat, PVC Pocket, Waterproof Bag, Name Card Holder, Diary, Binder etc.)  
다양한 생활용품( 우비, 놀이방매트, PVC주머니, 방수백, 명함집, 다이어리, 바인더 등)
3. Car Interiors (Sun Visor, Car Mat, Truck Cover, Heel Pad etc.)  
자동차 내장재( 선바이저, 카매트, 트럭덮개, 힐패드 등)
4. Tent (Tarpaulin), Waterproof Cloth, Raw Material Bag etc.  
천막(타포린), 방수포, 원료백, 대형풍선 등
5. Medical Supplies (Blood Bag, Urine Bag, Anti-decubitus Mattress, Hot Pack etc.)  
의료용품(혈액백, 유린백, 욕창매트리스, 찜질팩 등)
6. Labels, Gold/Silver Foil 라벨, 금은박 인쇄
7. Blister Packing 블리스터 포장





SW-AS

SINGLE HEAD, PEDAL TYPE  
다목적 고주파용착기, 싱글헤드, 페달식



SPECIFICATION

Power Source	220/380V 3Φ 60Hz (Overseas - As per customer's instruction )
Max. Power Consumption	15KVA
Max. High Frequency Output	7.5kW
Operating Frequency	27.12MHz
Pressure Device	Foot & pneumatic cylinder pressure
Stroke	90mm
Max. Pressure	300Kgf
Size of Electrode	Bar holder type
Size of Platen	450 x 700 mm
Overall Dimensions	1200x 1530 x 1660 mm

• The specifications are subject to change without notice. 사전통보없이 제품의 사양의 변경될 수 있습니다.



SW-TS

DOUBLE HEAD, PEDAL TYPE  
다목적 고주파용착기, 더블헤드, 페달식



SPECIFICATION

Power Source	220/380V 3Φ 60Hz (Overseas - As per customer's instruction )
Max. Power Consumption	10KVA
Max. High Frequency Output	5kW
Operating Frequency	40.68MHz
Pressure Device	Foot & pneumatic cylinder pressure
Stroke	70mm
Max. Pressure	187Kgf
Size of Electrode	Bar holder type
Size of Platen	400 x 700 mm
Overall Dimensions	1200 x 1450 x 1570 mm

• The specifications are subject to change without notice. 사전통보없이 제품의 사양의 변경될 수 있습니다.





SW-MB

C TYPE PERSS - BUTTON TYPE  
양수버튼 조작식 고주파용착기 (상부 전극 예열기능)



SPECIFICATION

Power Source	220/380V 3Φ 60Hz (Overseas - As per customer's instruction )
Max. Power Consumption	15KVA
Max. High Frequency Output	7.5kW
Operating Frequency	27.12MHz
Pressure Device	Pneumatic cylinder direct pressing
Stroke	250mm
Max. Pressure	736Kgf
Size of Electrode	300 x 400 mm
Size of Platen	400 x 600 mm
Overall Dimensions	1180 x 1610 x 1700 mm

• The specifications are subject to change without notice. 사전통보없이 제품의 사양의 변경될 수 있습니다.



SW-HB

SLIDE TYPE TO BOTH DIRECTIONS  
양방향 슬라이드식 고주파용착기 (상부 전극 예열기능)



SPECIFICATION

Power Source	220/380V 3Φ 60Hz (Overseas - As per customer's instruction )
Max. Power Consumption	30KVA
Max. High Frequency Output	15kW
Operating Frequency	27.12MHz
Pressure Device	Pneumatic cylinder direct pressing
Stroke	200mm
Max. Pressure	750Kgf
Size of Electrode	600 x 900 mm
Size of Platen	730 x 1000 mm
Overall Dimensions	3500 x 2600 x 1800 mm

• The specifications are subject to change without notice. 사전통보없이 제품의 사양의 변경될 수 있습니다.





SW-AM

LARGE-SIZED SLIDE TYPE TO BOTH DIRECTIONS  
대형 양방향 슬라이드식 고주파용착기



SPECIFICATION

Power Source	220/380V 3Φ 60Hz (Overseas - As per customer's instruction )
Max. Power Consumption	80KVA
Max. High Frequency Output	40kW
Operating Frequency	27.12MHz
Pressure Device	Hydraulic cylinder or pneumatic cylinder direct pressing
Stroke	200 mm
Max. Pressure	3tons
Size of Electrode	1000 x 1600 mm
Size of Platen	1100 x 1700 mm
Overall Dimensions	6300 x 3700 x 2100 mm

• The specifications are subject to change without notice 사전통보없이 제품의 사양의 변경될 수 있습니다



SW-MT

EXCLUSIVE MACHINE FOR TARPAULIN(TENT, TRUCK), BILLBOARD  
타포린 고주파용착기



SPECIFICATION

Power Source	220/380V 3Φ 60Hz (Overseas - As per customer's instruction )
Max. Power Consumption	15KVA
Max. High Frequency Output	7.5kW
Operating Frequency	27.12MHz
Pressure Device	Pneumatic cylinder direct pressing
Stroke	150mm
Max. Pressure	471Kgf
Size of Electrode	Bar holder type
Size of Platen	370x 750 mm
Overall Dimensions	950 x 1600 x 1700mm

• The specifications are subject to change without notice. 사전통보없이 제품의 사양의 변경될 수 있습니다.





SW-RT

EXCLUSIVE MACHINE FOR THE ROUND SHAPE PRODUCT  
동근 형태 제품 생산용 고주파용착기



SPECIFICATION

Power Source	220/380V 3Φ 60Hz (Overseas - As per customer's instruction )
Max. Power Consumption	15KVA
Max. High Frequency Output	7.5kW
Operating Frequency	27.12MHz
Pressure Device	Pneumatic cylinder direct pressing
Stroke	200mm
Max. Pressure	471Kgf
Size of Electrode	Bar holder type
Size of Platen	300 x 600 mm
Overall Dimensions	1000 x 2000 x 1900mm

• The specifications are subject to change without notice. 사전통보없이 제품의 사양의 변경될 수 있습니다.



SW-MY

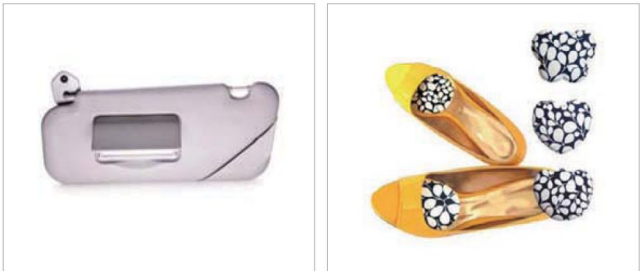
SIMULTANEOUS WELDING & CUTTING TYPE  
동시 용착 · 커팅 고주파용착기



SPECIFICATION

Power Source	220/380V 3Φ 60Hz (Overseas - As per customer's instruction)
Max. Power Consumption	15KVA
Max. High Frequency Output	7.5kW
Operating Frequency	27.12MHz
Pressure Device	Hydraulic cylinder(Booster cylinder)
Stroke	250 mm
Max. Pressure	3 tons
Size of Electrode	600 x 450 mm
Size of Platen	800 x 500 mm
Overall Dimensions	1300 x 2020x 2100 mm

• The specifications are subject to change without notice. 사전통보없이 제품의 사양의 변경될 수 있습니다.





SW-MG

MACHINE FOR GOLD/ SILVER FOIL  
금 · 은박 고주파용착기



SPECIFICATION

Power Source	220/380V 3Φ 60Hz (Overseas - As per customer's instruction)
Max. Power Consumption	10KVA
Max. High Frequency Output	5kW
Operating Frequency	40.68MHz
Pressure Device	Pneumatic cylinder direct pressing (2step)
Stroke	125mm
Foil Feeding Device	Pneumatic cylinder
Foil Winding Device	Motor drive
Max. Pressure	1step: 471Kgf , 2step : 942Kgf
Size of Electrode	200 x 350 mm
Size of Platen	350 x 430 mm
Overall Dimensions	1550 x 1150 x 1940 mm

• The specifications are subject to change without notice. 사전통보없이 제품의 사양의 변경될 수 있습니다.



SW-BT

CONVEYER BELT WELDING MACHINE  
컨베이어 벨트 고주파용착기



SPECIFICATION

Power Source	220/380V 3Φ 60Hz (Overseas - As per customer's instructions)
Max. Power Consumption	30KVA
Max. High Frequency Output	15kW
Operating Frequency	27.12MHz
Pressure Device	Pneumatic cylinder direct pressing
Stroke	250mm
Max. Pressure	923Kgf
Size of Electrode	380 x 700mm
Size of Platen	550 x 800mm
Overall Dimensions	1050 x 2280 x 2320mm

• The specifications are subject to change without notice. 사전통보없이 제품의 사양의 변경될 수 있습니다.

