

Product Specification

DDL165-00

Electrically-assisted wheel

Smart Operation

- Supports automatic forward/reverse motion and auto-retraction functionality, with an integrated speed adjustment system to provide an enhanced -friendly and comfortable experience.

Outstanding Performance

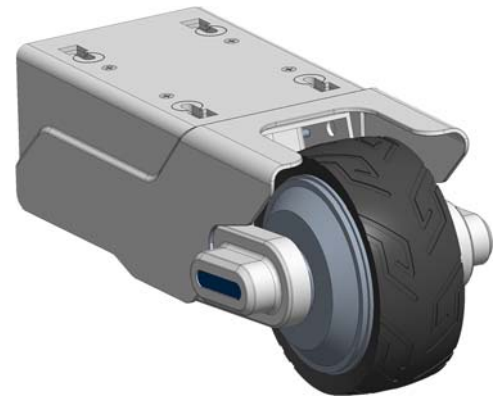
- Equipped with a high-performance brushless DC motor drive system, ensuring smooth operation, low noise, and extended lifespan.

Durability & Strength

- The main frame is constructed from high-strength steel to enhance load-bearing capacity and overall structural stability; wheels are coated with premium rubber material, offering excellent wear resistance and vibration damping to ensure safety.

Flexible Adjustment

- Features an electric telescopic actuator for precise height adjustment control, further enhancing operational flexibility and reliability.



Technical Data

Wheel diameter: 160mm

Electric wheel width: 181mm

Wheel surface width: 54mm

Length: 378.8mm

Installation height: 200 - 230mm

Rated power: 200W

Rated voltage: DC24V

Rated torque: 15N·m

Operating temperature: 0°C - 45°C

Cruising speed: 3km/h

Speed range: 0 - 6km/h

Wheel lifting stroke: 0 - 90mm

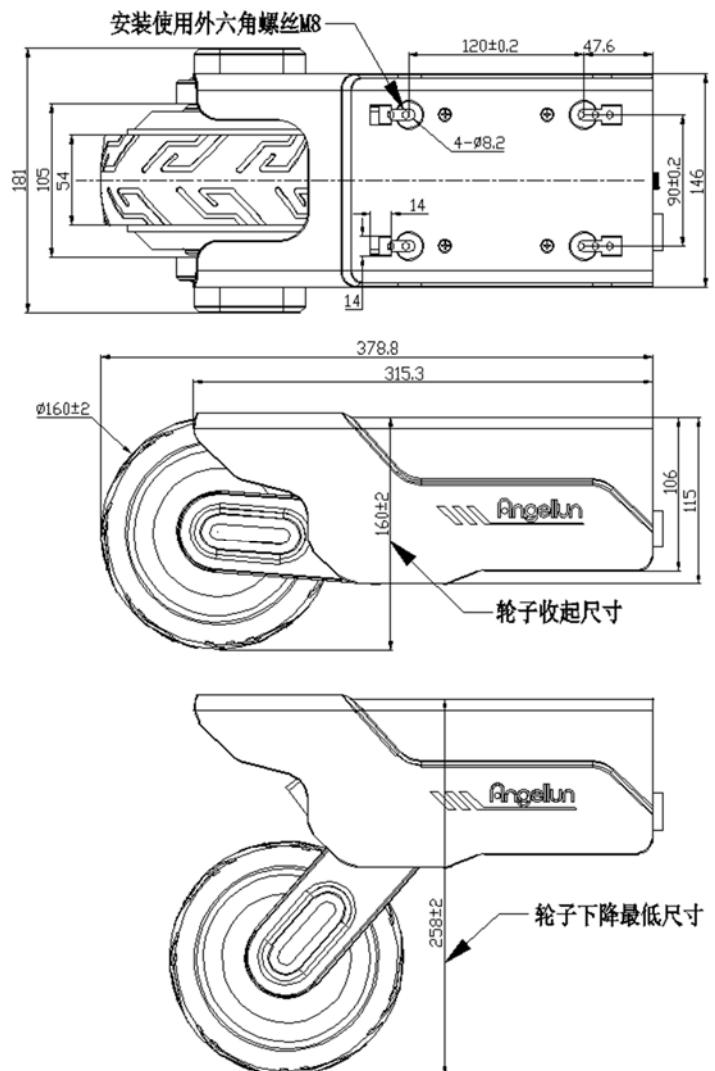
Dynamic load capacity: 300kg

Climbing ability: 3°

Battery capacity: 10Ah

Outlet wire length: 0.6m

Total weight of drive wheel: 8.635kg



SKR-JS-002-00

Wired Controller

Simple, Convenient Operation with Comfortable Grip and Powerful Functions
It has functions such as intelligent real - time battery level display, stepless speed change, cruise control, and automatic electric wheel lifting.

Technical Parameters

Rated voltage: 25.2 V

Standby current: $\leq 25\text{mA}$

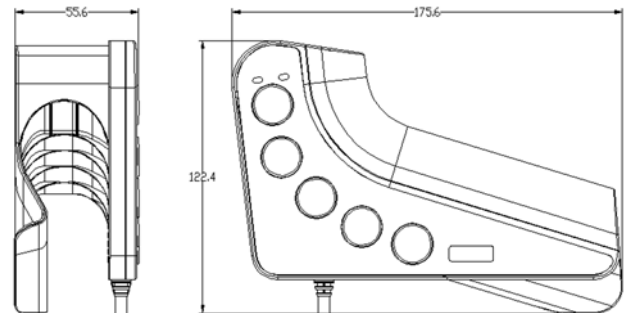
Power consumption: $\leq 0.65\text{W}$

External dimension: $122.4 \times 175.6 \times 55.6\text{mm}$

Total weight of the controller: 0.248kg

Maximum installation diameter: $\leq 40\text{mm}$

Spring wire length: 2800mm



SKR-BC-003-00

24V Lithium - Ion Battery (Optional)

Adopts a high - performance and long - range ternary lithium - ion battery pack with strong power and long - lasting endurance. It has five - fold hardware protection (over - charge/over - discharge/over - current/short - circuit/over - temperature), and is monitored by an independent relay and IC chip to ensure safety and reliability. It is equipped with soft - start technology to suppress current surges, extend the equipment life, and has lower power consumption. The modular quick - release design allows for installation/replacement within 5 seconds. It is suitable for high - frequency scenarios such as medical carts and hospital beds. It supports operation in a wide temperature range from -20°C to 45°C and has an IP54 protection level, taking into account both durability and environmental adaptability.

Technical Data

Output voltage: 22.4V - 29.4V

Output current: 0 - 23A

Capacity: 10Ah

Charging voltage: DC29.4V

Charging current: 3A

Over - current protection: $25\text{A}(\pm 2\text{A})$

External dimension: $250 \times 145 \times 76\text{mm}$

Power cord length: 0.6m

Weight: $2.0\text{kg} \pm 0.1\text{kg}$

Charging operating temperature: -20°C - 45°C

Discharging operating temperature: 0°C - 45°C

Storage temperature: -20°C - $45^{\circ}\text{C}/60\% \pm 25\%$ (less than 3 months)

