

## Products

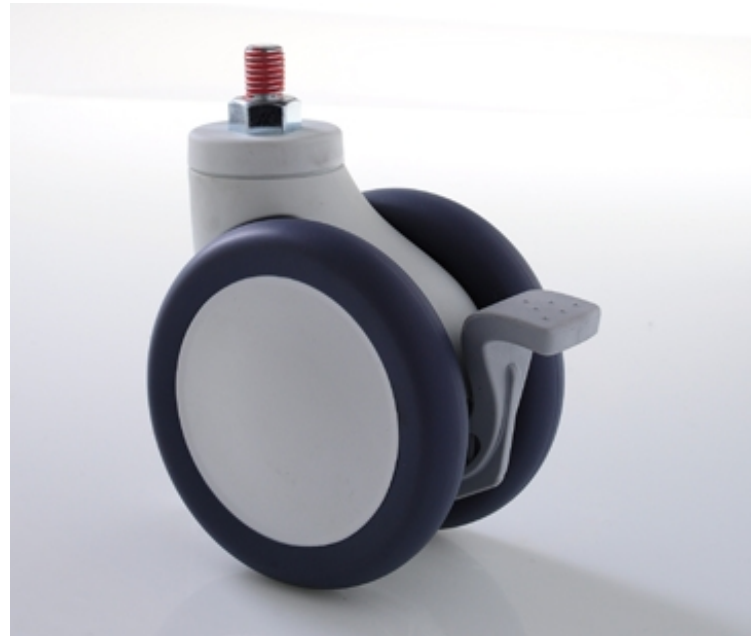
### MYSD-75B-062-M12X15

#### Swivel twin wheel caster with total brake,

#### Threaded stem

Housing and wheel core made of high quality Nylon –PA6, which with perfect load-bearing capacity, excellent oil resistivity, abrasive resistance, drug and chemical resistance for long life of our casters.

Wheel tread made of TPE material. It shows better resistance to weathering, fatigue and high temperature, it assures of quiet and stable rolling.



## Technical data

Wheel Diameter	75mm
Tread width	13.7mm
Caster width	57mm
Bolt diameter	M12
Bolt Length	15mm
Offset	23.5mm
Swivel Radius	76mm
Swivel Interference	152mm
Overall height	94.5mm
Temperature	-30/+80°C
Standard	EN12531
Weight	0.27KG
Dynamic load capacity	50KG
Static Load capacity	100KG

