



Precision Gear Pump

Model code	Capacity [cm ³ /Rotation]	Oper. torque [Nm]	Max. torque [Nm]	Net weight [kg]
HKPG1310	1.0	8	12	1.2

Pump Details

Inlet Pressure max ; 0-10 bar
 Work Pressure max ; 70 bar
 Speed ; 1-100 rpm/min
 Suction Port ; PT1/4
 Pressure Port ; PT1/4
 Rotation ; Right(cw), in view of drive shaft
 Design ; External Spur Gear
 Sealing Type ; V-packing or Roto variseal etc
 Viscosity-Range ; 10-1,000,000 cst
 Operating Temperature ; Max. 120 °C

Materials

Center plate rear ; Stainless Steel hardened
 Center plate ; Stainless Steel hardened
 Center plate front ; Stainless Steel hardened
 Gear ; Stainless Steel hardened
 Shaft ; Stainless Steel hardened
 Sealing housing ; Stainless Steel
 Seal : PTFE or PTFE + Carbon

Reference

- In our case of saw-toothed coupling between motor and gear pump, they needs each gap of less than 2mm.
- For cooling, pumps need to be supplied somewhat air and somewhat space of at least 150mm around pumps.

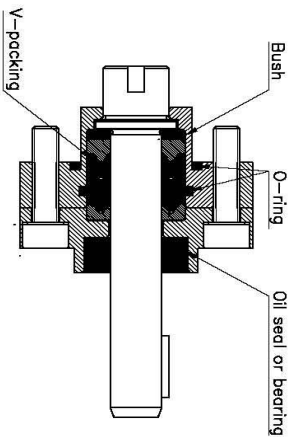
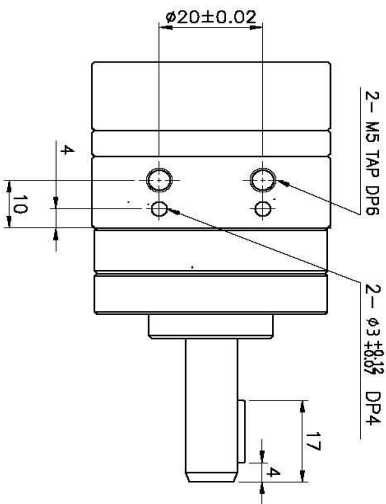
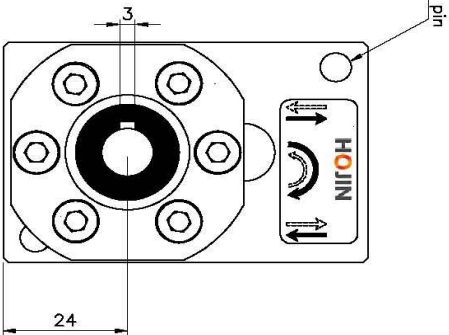
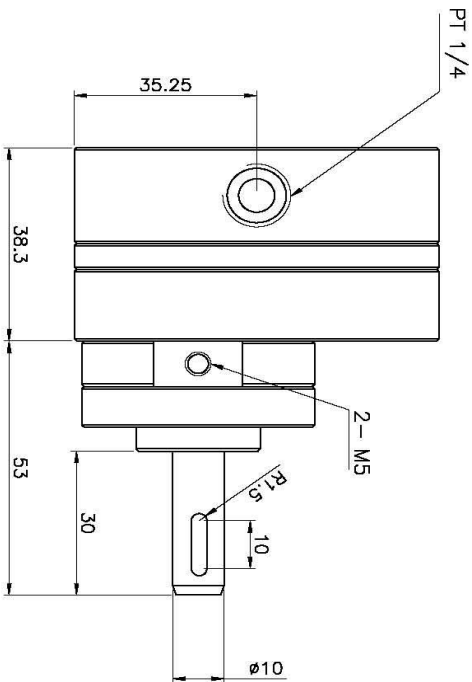
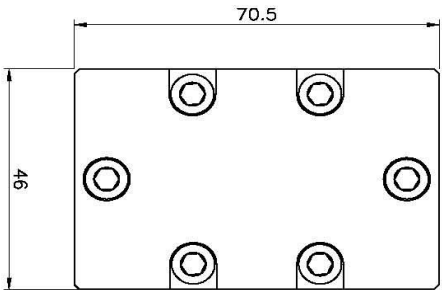


Precautions

Make sure the gear pump is aligned with the motor, otherwise the life expectancy of pumps may be shorten.

Make sure Precision Gear Pump do not be operated without lubricant because it might shorten the life expectancy

Architecture drawing



Sealing block
[V-packing]